

Datasheet for ABIN635626
anti-Klotho beta antibody (Middle Region)



[Go to Product page](#)

2 Images

Overview

Quantity:	100 µL
Target:	Klotho beta (KLB)
Binding Specificity:	Middle Region
Reactivity:	Human, Mouse, Rat
Host:	Rabbit
Clonality:	Polyclonal
Conjugate:	This Klotho beta antibody is un-conjugated
Application:	Western Blotting (WB)

Product Details

Immunogen:	Klotho Beta antibody was raised using the middle region of KLB corresponding to a region with amino acids DAYTIRRGLFYVDFNSKQKERKPKSSAHYYKQIIRENGFSLKESTPDVQG
Specificity:	Klotho Beta antibody was raised against the middle region of KLB
Purification:	Affinity purified

Target Details

Target:	Klotho beta (KLB)
Alternative Name:	Klotho beta (KLB Products)
Background:	<p>KLB is a single-pass type III membrane protein. It contributes to the transcriptional repression of cholesterol 7-alpha-hydroxylase (CYP7A1), the rate-limiting enzyme in bile acid synthesis.</p> <p>KLB is probably inactive as a glycosidase. It increases the ability of FGFR1 and FGFR4 to bind</p>

Target Details

FGF21.

Molecular Weight: 120 kDa (MW of target protein)

Pathways: [Fc-epsilon Receptor Signaling Pathway](#), [EGFR Signaling Pathway](#), [Neurotrophin Signaling Pathway](#), [Growth Factor Binding](#)

Application Details

Application Notes: WB: 1 µg/mL
Optimal conditions should be determined by the investigator.

Comment: Klotho Beta Blocking Peptide, catalog no. 33R-1868, is also available for use as a blocking control in assays to test for specificity of this Klotho Beta antibody

Restrictions: For Research Use only

Handling

Format: Lyophilized

Reconstitution: Lyophilized powder. Add distilled water for a 1 mg/mL concentration of KLB antibody in PBS

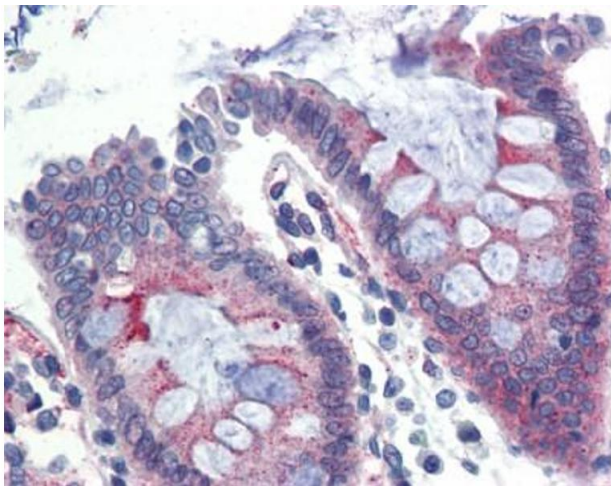
Concentration: Lot specific

Buffer: PBS

Handling Advice: Avoid repeated freeze/thaw cycles.
Dilute only prior to immediate use.

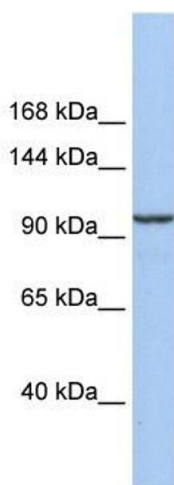
Storage: 4 °C/-20 °C

Storage Comment: Store at 2-8 °C for short periods. For longer periods of storage, store at -20 °C.



Immunohistochemistry

Image 1. Klotho Beta antibody was used for immunohistochemistry at a concentration of 4-8 ug/ml. Magnification is at 400X



Western Blotting

Image 2. Klotho Beta antibody used at 1 ug/ml to detect target protein.