

Datasheet for ABIN635629

anti-SAMD8 antibody (Middle Region)[Go to Product page](#)**1** Image

Overview

Quantity:	100 µL
Target:	SAMD8
Binding Specificity:	Middle Region
Reactivity:	Mouse, Human, Rat
Host:	Rabbit
Clonality:	Polyclonal
Conjugate:	This SAMD8 antibody is un-conjugated
Application:	Western Blotting (WB)

Product Details

Immunogen:	SAMD8 antibody was raised using the middle region of SAMD8 corresponding to a region with amino acids MQTYPPLPDIFLDSVPRIPWAFAMTEVCGMILCYIWLLVLLHKKHRSILL
Specificity:	SAMD8 antibody was raised against the middle region of SAMD8
Purification:	Affinity purified

Target Details

Target:	SAMD8
Alternative Name:	SAMD8 (SAMD8 Products)
Background:	SAMD8 is a multi-pass membrane protein. It belongs to the sphingomyelin synthase family and contains 1 SAM (sterile alpha motif) domain. The function of the SAMD8 protein remains unknown.

Target Details

Molecular Weight: 36 kDa (MW of target protein)

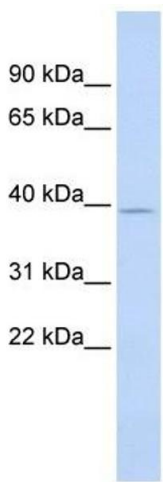
Application Details

Application Notes:	WB: 1 µg/mL Optimal conditions should be determined by the investigator.
Comment:	SAMD8 Blocking Peptide, catalog no. 33R-6349, is also available for use as a blocking control in assays to test for specificity of this SAMD8 antibody
Restrictions:	For Research Use only

Handling

Format:	Lyophilized
Reconstitution:	Lyophilized powder. Add distilled water for a 1 mg/mL concentration of SAMD8 antibody in PBS
Concentration:	Lot specific
Buffer:	PBS
Handling Advice:	Avoid repeated freeze/thaw cycles. Dilute only prior to immediate use.
Storage:	4 °C/-20 °C
Storage Comment:	Store at 2-8 °C for short periods. For longer periods of storage, store at -20 °C.

Images



Western Blotting

Image 1. SAMD8 antibody used at 1 ug/ml to detect target protein.