

Datasheet for ABIN635638 **anti-SLC6A2 antibody**



[Go to Product page](#)

1 Image

Overview

Quantity:	100 µL
Target:	SLC6A2
Reactivity:	Rat, Human, Mouse
Host:	Rabbit
Clonality:	Polyclonal
Conjugate:	This SLC6A2 antibody is un-conjugated
Application:	Western Blotting (WB)

Product Details

Immunogen:	SLC6 A2 antibody was raised using a synthetic peptide corresponding to a region with amino acids STLSGSTFWAVVFFVMLLALGLDSSMGGMEAVITGLADDFQVLKRHRKLF
Purification:	Affinity purified

Target Details

Target:	SLC6A2
Alternative Name:	SLC6A2 (SLC6A2 Products)
Background:	The SLC6A2 gene encodes a norepinephrine (noradrenaline) transporter, which is responsible for reuptake of norepinephrine into presynaptic nerve terminals and is a regulator of norepinephrine homeostasis.
Molecular Weight:	69 kDa (MW of target protein)

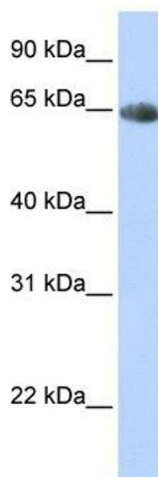
Application Details

Application Notes:	WB: 1 µg/mL Optimal conditions should be determined by the investigator.
Comment:	SLC6A2 Blocking Peptide, catalog no. 33R-8875, is also available for use as a blocking control in assays to test for specificity of this SLC6A2 antibody
Restrictions:	For Research Use only

Handling

Format:	Lyophilized
Reconstitution:	Lyophilized powder. Add distilled water for a 1 mg/mL concentration of SLC0 2 antibody in PBS
Concentration:	Lot specific
Buffer:	PBS
Handling Advice:	Avoid repeated freeze/thaw cycles.
Storage:	4 °C/-20 °C
Storage Comment:	Store at 2-8 °C for short periods. For longer periods of storage, store at -20 °C.

Images



Western Blotting

Image 1. SLC6A2 antibody used at 1 ug/ml to detect target protein.