

Datasheet for ABIN635643
anti-C5ORF4 antibody (N-Term)



[Go to Product page](#)

2 Images

Overview

Quantity:	100 µL
Target:	C5ORF4 (FAXDC2)
Binding Specificity:	N-Term
Reactivity:	Human, Dog
Host:	Rabbit
Clonality:	Polyclonal
Conjugate:	This C5ORF4 antibody is un-conjugated
Application:	Western Blotting (WB), Immunohistochemistry (IHC)

Product Details

Immunogen:	C5 ORF4 antibody was raised using the N terminal Of C5 rf4 corresponding to a region with amino acids MKGEAGHMLHNEKSKQEGHIWGSRRRTAFILGSGLLSFVAFWNSVTWHLQ
Specificity:	C5 ORF4 antibody was raised against the N terminal Of C5 rf4
Purification:	Affinity purified

Target Details

Target:	C5ORF4 (FAXDC2)
Alternative Name:	C5ORF4 (FAXDC2 Products)
Background:	C5ORF4 is involved in the fatty acid biosynthetic process.
Molecular Weight:	21 kDa (MW of target protein)

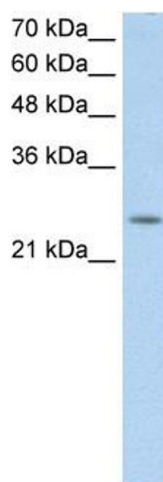
Application Details

Application Notes:	WB: 0.25 µg/mL, IHC: 4-8 µg/mL Optimal conditions should be determined by the investigator.
Comment:	C5ORF4 Blocking Peptide, catalog no. 33R-6138, is also available for use as a blocking control in assays to test for specificity of this C5ORF4 antibody
Restrictions:	For Research Use only

Handling

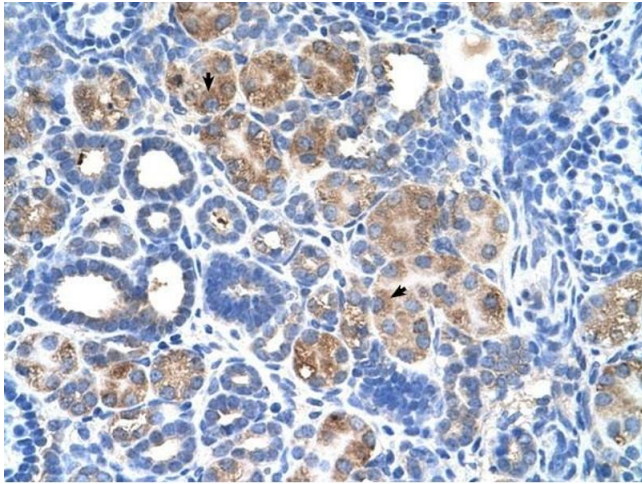
Format:	Lyophilized
Reconstitution:	Lyophilized powder. Add distilled water for a 1 mg/mL concentration of C0 RF4 antibody in PBS
Concentration:	Lot specific
Buffer:	PBS
Handling Advice:	Avoid repeated freeze/thaw cycles. Dilute only prior to immediate use.
Storage:	4 °C/-20 °C
Storage Comment:	Store at 2-8 °C for short periods. For longer periods of storage, store at -20 °C.

Images



Western Blotting

Image 1. C5ORF4 antibody used at 0.25 ug/ml to detect target protein.



Immunohistochemistry

Image 2. C5ORF4 antibody was used for immunohistochemistry at a concentration of 4-8 ug/ml to stain Epithelial cells of renal tubule (arrows) in Human Kidney. Magnification is at 400X