

Datasheet for ABIN635645  
**anti-Pannexin 3 antibody (Middle Region)**



[Go to Product page](#)

1 Image

## Overview

Quantity:	100 µL
Target:	Pannexin 3 (PANX3)
Binding Specificity:	Middle Region
Reactivity:	Mammalian
Host:	Rabbit
Clonality:	Polyclonal
Conjugate:	This Pannexin 3 antibody is un-conjugated
Application:	Western Blotting (WB)

## Product Details

Immunogen:	Pannexin 3 antibody was raised using the middle region of PANX3 corresponding to a region with amino acids IISELDKSYNRSIRLVQHMLKIRQKSSDPYVFWNELEKARKERYFEFPLL
Specificity:	Pannexin 3 antibody was raised against the middle region of PANX3
Cross-Reactivity:	Human, Mouse (Murine), Rat (Rattus)
Purification:	Affinity purified

## Target Details

Target:	Pannexin 3 (PANX3)
Alternative Name:	Pannexin 3 ( <a href="#">PANX3 Products</a> )
Background:	The protein encoded by this gene belongs to the innexin family. Innexin family members are

## Target Details

known to be the structural components of gap junctions.

Molecular Weight: 45 kDa (MW of target protein)

## Application Details

Application Notes: WB: 1 µg/mL

Optimal conditions should be determined by the investigator.

Comment: Pannexin 3 Blocking Peptide, catalog no. 33R-4008, is also available for use as a blocking control in assays to test for specificity of this Pannexin 3 antibody

Restrictions: For Research Use only

## Handling

Format: Lyophilized

Reconstitution: Lyophilized powder. Add distilled water for a 1 mg/mL concentration of PANX3 antibody in PBS

Concentration: Lot specific

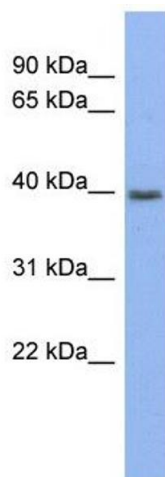
Buffer: PBS

Handling Advice: Avoid repeated freeze/thaw cycles.  
Dilute only prior to immediate use.

Storage: 4 °C/-20 °C

Storage Comment: Store at 2-8 °C for short periods. For longer periods of storage, store at -20 °C.

## Images



### Western Blotting

**Image 1.** Pannexin 3 antibody used at 1 ug/ml to detect target protein.