

Datasheet for ABIN635657 **anti-DPY19L2 antibody**



[Go to Product page](#)

1 Image

Overview

Quantity:	100 µL
Target:	DPY19L2
Reactivity:	Human, Rat
Host:	Rabbit
Clonality:	Polyclonal
Conjugate:	This DPY19L2 antibody is un-conjugated
Application:	Western Blotting (WB)

Product Details

Immunogen:	DPY19 L2 antibody was raised using a synthetic peptide corresponding to a region with amino acids IIGEFNNLPQEELLQWIKYSTTSDAVFAGAMPTMASIKLSTLHPIVNHPH
Purification:	Affinity purified

Target Details

Target:	DPY19L2
Alternative Name:	DPY19L2 (DPY19L2 Products)
Background:	The function of DPY19L2 has not been widely studied, and is yet to be fully elucidated.
Molecular Weight:	87 kDa (MW of target protein)

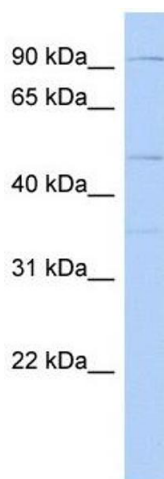
Application Details

Application Notes:	WB: 1 µg/mL Optimal conditions should be determined by the investigator.
Comment:	DPY19L2 Blocking Peptide, catalog no. 33R-3998, is also available for use as a blocking control in assays to test for specificity of this DPY19L2 antibody
Restrictions:	For Research Use only

Handling

Format:	Lyophilized
Reconstitution:	Lyophilized powder. Add distilled water for a 1 mg/mL concentration of DPY10 2 antibody in PBS
Concentration:	Lot specific
Buffer:	PBS
Handling Advice:	Avoid repeated freeze/thaw cycles.
Storage:	4 °C/-20 °C
Storage Comment:	Store at 2-8 °C for short periods. For longer periods of storage, store at -20 °C.

Images



Western Blotting

Image 1. DPY19L2 antibody used at 1 ug/ml to detect target protein.