

Datasheet for ABIN635658  
**anti-CLEC4G antibody (N-Term)**



[Go to Product page](#)

1 Image

## Overview

Quantity:	100 µL
Target:	CLEC4G
Binding Specificity:	N-Term
Reactivity:	Human
Host:	Rabbit
Clonality:	Polyclonal
Conjugate:	This CLEC4G antibody is un-conjugated
Application:	Western Blotting (WB)

## Product Details

Immunogen:	CLEC4 G antibody was raised using the N terminal of CLEC4 corresponding to a region with amino acids RTNASKQTAALGALKEEVGDCHSCSGTQAQLQTTRAELGEAQAKLMEQE
Specificity:	CLEC4 G antibody was raised against the N terminal of CLEC4
Purification:	Affinity purified

## Target Details

Target:	CLEC4G
Alternative Name:	CLEC4G ( <a href="#">CLEC4G Products</a> )
Background:	The function of C-Type Lectin protein is not widely studied, and is yet to be elucidated fully.
Molecular Weight:	32 kDa (MW of target protein)

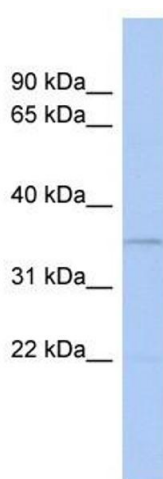
## Application Details

Application Notes:	WB: 1 µg/mL Optimal conditions should be determined by the investigator.
Comment:	CLEC4G Blocking Peptide, catalog no. 33R-8232, is also available for use as a blocking control in assays to test for specificity of this CLEC4G antibody
Restrictions:	For Research Use only

## Handling

Format:	Lyophilized
Reconstitution:	Lyophilized powder. Add distilled water for a 1 mg/mL concentration of CLECO antibody in PBS
Concentration:	Lot specific
Buffer:	PBS
Handling Advice:	Avoid repeated freeze/thaw cycles. Dilute only prior to immediate use.
Storage:	4 °C/-20 °C
Storage Comment:	Store at 2-8 °C for short periods. For longer periods of storage, store at -20 °C.

## Images



### Western Blotting

**Image 1.** CLEC4G antibody used at 1 ug/ml to detect target protein.