

Datasheet for ABIN635667 **anti-P2RY12 antibody (N-Term)**



[Go to Product page](#)

1 Image

Overview

Quantity:	100 µL
Target:	P2RY12
Binding Specificity:	N-Term
Reactivity:	Human, Mouse, Rat
Host:	Rabbit
Clonality:	Polyclonal
Conjugate:	This P2RY12 antibody is un-conjugated
Application:	Western Blotting (WB)

Product Details

Immunogen:	P2 RY12 antibody was raised using the N terminal of P2 Y12 corresponding to a region with amino acids VAIWMFVFMKPSWGISVYMFNLALADFLYVLTLPALIFYFNKTDWIFG
Specificity:	P2 RY12 antibody was raised against the N terminal of P2 Y12
Purification:	Affinity purified

Target Details

Target:	P2RY12
Alternative Name:	P2RY12 (P2RY12 Products)
Background:	P2RY12 belongs to the family of G-protein coupled receptors. This family has several receptor subtypes with different pharmacological selectivity, which overlaps in some cases, for various adenosine and uridine nucleotides. This receptor is involved in platelets aggregation, and is a

Target Details

potential target for the treatment of thromboembolisms and other clotting disorders.

Molecular Weight: 39 kDa (MW of target protein)

Application Details

Application Notes: WB: 1 µg/mL

Optimal conditions should be determined by the investigator.

Comment: P2RY12 Blocking Peptide, catalog no. 33R-9419, is also available for use as a blocking control in assays to test for specificity of this P2RY12 antibody

Restrictions: For Research Use only

Handling

Format: Lyophilized

Reconstitution: Lyophilized powder. Add distilled water for a 1 mg/mL concentration of P0 Y12 antibody in PBS

Concentration: Lot specific

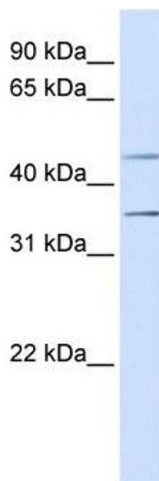
Buffer: PBS

Handling Advice: Avoid repeated freeze/thaw cycles.
Dilute only prior to immediate use.

Storage: 4 °C/-20 °C

Storage Comment: Store at 2-8 °C for short periods. For longer periods of storage, store at -20 °C.

Images



Western Blotting

Image 1. P2RY12 antibody used at 1 µg/ml to detect target protein.