

Datasheet for ABIN635671  
**anti-TMEM63A antibody (N-Term)**



[Go to Product page](#)

1 Image

## Overview

Quantity:	100 µL
Target:	TMEM63A
Binding Specificity:	N-Term
Reactivity:	Human
Host:	Rabbit
Clonality:	Polyclonal
Conjugate:	This TMEM63A antibody is un-conjugated
Application:	Western Blotting (WB)

## Product Details

Immunogen:	TMEM63 A antibody was raised using the N terminal of TMEM63 corresponding to a region with amino acids MDSPFLELWQSKAVSIREQLGLGDRPNDSYCYNSAKNSTVLQGVTGGIP
Specificity:	TMEM63 A antibody was raised against the N terminal of TMEM63
Purification:	Affinity purified

## Target Details

Target:	TMEM63A
Alternative Name:	TMEM63A ( <a href="#">TMEM63A Products</a> )
Background:	TMEM63A is a multi-pass membrane proteinPotential. It belongs to the SPO75/TMEM63 family. The exact function of TMEM63A remains unknown.

## Target Details

---

Molecular Weight: 89 kDa (MW of target protein)

## Application Details

---

Application Notes: WB: 1 µg/mL  
Optimal conditions should be determined by the investigator.

Comment: TMEM63A Blocking Peptide, catalog no. 33R-5872, is also available for use as a blocking control in assays to test for specificity of this TMEM63A antibody

Restrictions: For Research Use only

## Handling

---

Format: Lyophilized

Reconstitution: Lyophilized powder. Add distilled water for a 1 mg/mL concentration of TMEM60 antibody in PBS

Concentration: Lot specific

Buffer: PBS

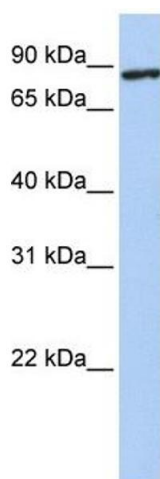
Handling Advice: Avoid repeated freeze/thaw cycles.  
Dilute only prior to immediate use.

Storage: 4 °C/-20 °C

Storage Comment: Store at 2-8 °C for short periods. For longer periods of storage, store at -20 °C.

## Images

---



### Western Blotting

**Image 1.** TMEM63A antibody used at 1 ug/ml to detect target protein.