

Datasheet for ABIN635683  
**anti-RPN1 antibody (N-Term)**



[Go to Product page](#)

1 Image

## Overview

Quantity:	100 µL
Target:	RPN1
Binding Specificity:	N-Term
Reactivity:	Human
Host:	Rabbit
Clonality:	Polyclonal
Conjugate:	This RPN1 antibody is un-conjugated
Application:	Western Blotting (WB)

## Product Details

Immunogen:	Ribophorin I antibody was raised using the N terminal of RPN1 corresponding to a region with amino acids TSRATSFLLALEPELEARLAHLGVQVKGEDEEENNLEVRETKIKGKSGRF
Specificity:	Ribophorin I antibody was raised against the N terminal of RPN1
Purification:	Affinity purified

## Target Details

Target:	RPN1
Alternative Name:	Ribophorin I ( <a href="#">RPN1 Products</a> )
Background:	RPN1 is a type I integral membrane protein found only in the rough endoplasmic reticulum. It is part of an N-oligosaccharyl transferase complex that links high mannose oligosaccharides to asparagine residues found in the Asn-X-Ser/Thr consensus motif of nascent polypeptide

## Target Details

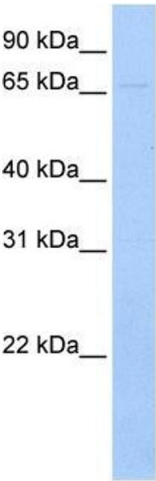
	chains. RPN1 forms part of the regulatory subunit of the 26S proteasome and may mediate binding of ubiquitin-like domains to this proteasome.
Molecular Weight:	66 kDa (MW of target protein)

## Application Details

Application Notes:	WB: 1 µg/mL Optimal conditions should be determined by the investigator.
Comment:	Ribophorin I Blocking Peptide, catalog no. 33R-9295, is also available for use as a blocking control in assays to test for specificity of this Ribophorin I antibody
Restrictions:	For Research Use only

## Handling

Format:	Lyophilized
Reconstitution:	Lyophilized powder. Add distilled water for a 1 mg/mL concentration of RPN1 antibody in PBS
Concentration:	Lot specific
Buffer:	PBS
Handling Advice:	Avoid repeated freeze/thaw cycles. Dilute only prior to immediate use.
Storage:	4 °C/-20 °C
Storage Comment:	Store at 2-8 °C for short periods. For longer periods of storage, store at -20 °C.



Western Blotting

**Image 1.** Ribophorin I antibody used at 1 ug/ml to detect target protein.