

Datasheet for ABIN635684 **anti-PIGF antibody (N-Term)**



[Go to Product page](#)

1 Image

Overview

Quantity:	100 µL
Target:	PIGF
Binding Specificity:	N-Term
Reactivity:	Human
Host:	Rabbit
Clonality:	Polyclonal
Conjugate:	This PIGF antibody is un-conjugated
Application:	Western Blotting (WB)

Product Details

Immunogen:	PIGF antibody was raised using the N terminal of PIGF corresponding to a region with amino acids MKDNDIKRLLYTHLLCIFSILSVFIPSLFLENFSILETHLTWLCICSGF
Specificity:	PIGF antibody was raised against the N terminal of PIGF
Purification:	Affinity purified

Target Details

Target:	PIGF
Alternative Name:	PIGF (PIGF Products)
Background:	PIGF is a protein involved in glycosylphosphatidylinositol (GPI)-anchor biosynthesis. The GPI-anchor, a glycolipid containing three mannose molecules in its core backbone, is found on many blood cells where it serves to anchor proteins to the cell surface. PIGF and another GPI

Target Details

synthesis protein, PIGO, function in the transfer of ethanolaminephosphate to the third mannose in GPI.

Molecular Weight: 25 kDa (MW of target protein)

Pathways: [Inositol Metabolic Process](#)

Application Details

Application Notes: WB: 1 µg/mL
Optimal conditions should be determined by the investigator.

Comment: PIGF Blocking Peptide, catalog no. 33R-6128, is also available for use as a blocking control in assays to test for specificity of this PIGF antibody

Restrictions: For Research Use only

Handling

Format: Lyophilized

Reconstitution: Lyophilized powder. Add distilled water for a 1 mg/mL concentration of PIGF antibody in PBS

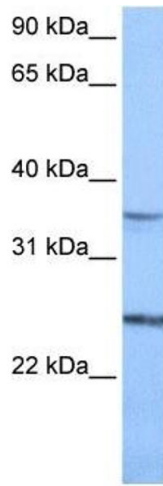
Concentration: Lot specific

Buffer: PBS

Handling Advice: Avoid repeated freeze/thaw cycles.
Dilute only prior to immediate use.

Storage: 4 °C/-20 °C

Storage Comment: Store at 2-8 °C for short periods. For longer periods of storage, store at -20 °C.



Western Blotting

Image 1. PIGF antibody used at 1 ug/ml to detect target protein.