

Datasheet for ABIN635687 **anti-CLN8 antibody**



[Go to Product page](#)

1 Image

Overview

Quantity:	100 µL
Target:	CLN8
Reactivity:	Human, Dog
Host:	Rabbit
Clonality:	Polyclonal
Conjugate:	This CLN8 antibody is un-conjugated
Application:	Western Blotting (WB)

Product Details

Immunogen:	CLN8 antibody was raised using a synthetic peptide corresponding to a region with amino acids MNPASDGGTSESIFDLDYASWGIRSTLMVAGFVFYLGVFVVCHQLSSSLN
Purification:	Affinity purified

Target Details

Target:	CLN8
Alternative Name:	CLN8 (CLN8 Products)
Background:	CLN8 is a transmembrane protein belonging to a family of proteins containing TLC domains, which are postulated to function in lipid synthesis, transport, or sensing. The protein localizes to the endoplasmic reticulum (ER), and may recycle between the ER and ER-Golgi intermediate compartment.
Molecular Weight:	33 kDa (MW of target protein)

Target Details

Pathways: [Regulation of Cell Size, Dicarboxylic Acid Transport](#)

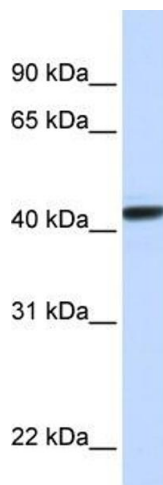
Application Details

Application Notes:	WB: 1 µg/mL Optimal conditions should be determined by the investigator.
Comment:	CLN8 Blocking Peptide, catalog no. 33R-6257, is also available for use as a blocking control in assays to test for specificity of this CLN8 antibody
Restrictions:	For Research Use only

Handling

Format:	Lyophilized
Reconstitution:	Lyophilized powder. Add distilled water for a 1 mg/mL concentration of CLN8 antibody in PBS
Concentration:	Lot specific
Buffer:	PBS
Handling Advice:	Avoid repeated freeze/thaw cycles.
Storage:	4 °C/-20 °C
Storage Comment:	Store at 2-8 °C for short periods. For longer periods of storage, store at -20 °C.

Images



Western Blotting

Image 1. CLN8 antibody used at 1 ug/ml to detect target protein.