

## Datasheet for ABIN635691 **anti-ALDH3A2 antibody (C-Term)**



[Go to Product page](#)

### 2 Images

#### Overview

Quantity:	100 µL
Target:	ALDH3A2
Binding Specificity:	C-Term
Reactivity:	Human, Rat, Mouse
Host:	Rabbit
Clonality:	Polyclonal
Conjugate:	This ALDH3A2 antibody is un-conjugated
Application:	Western Blotting (WB), Immunohistochemistry (IHC)

#### Product Details

Immunogen:	ALDH3 A2 antibody was raised using the C terminal of ALDH3 2 corresponding to a region with amino acids FINERKPLALYVFSHNHKLKRMIDETSSGGVTGNDVIMHFTLNSFPFG
Specificity:	ALDH3 A2 antibody was raised against the C terminal of ALDH3 2
Purification:	Affinity purified

#### Target Details

Target:	ALDH3A2
Alternative Name:	ALDH3A2 ( <a href="#">ALDH3A2 Products</a> )
Background:	Aldehyde dehydrogenase isozymes are thought to play a major role in the detoxification of aldehydes generated by alcohol metabolism and lipid peroxidation. This gene product catalyzes the oxidation of long-chain aliphatic aldehydes to fatty acid. Mutations in the gene cause

## Target Details

---

Sjogren-Larsson syndrome.

Molecular Weight: 53 kDa (MW of target protein)

## Application Details

---

Application Notes: WB: 0.25 µg/mL, IHC: 4-8 µg/mL  
Optimal conditions should be determined by the investigator.

Comment: ALDH3A2 Blocking Peptide, catalog no. 33R-2933, is also available for use as a blocking control in assays to test for specificity of this ALDH3A2 antibody

Restrictions: For Research Use only

## Handling

---

Format: Lyophilized

Reconstitution: Lyophilized powder. Add distilled water for a 1 mg/mL concentration of ALDH0 2 antibody in PBS

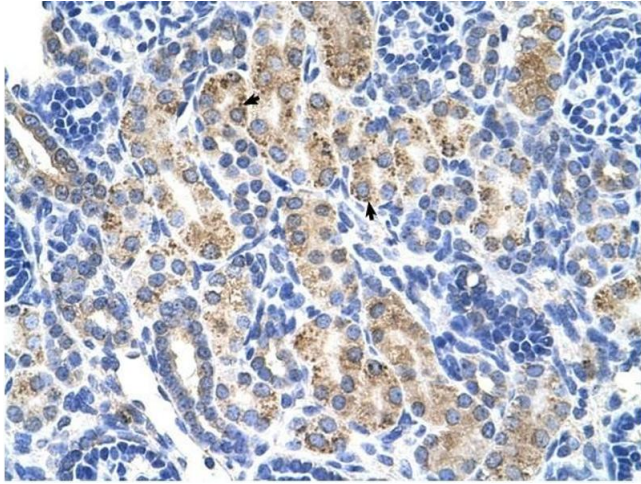
Concentration: Lot specific

Buffer: PBS

Handling Advice: Avoid repeated freeze/thaw cycles.  
Dilute only prior to immediate use.

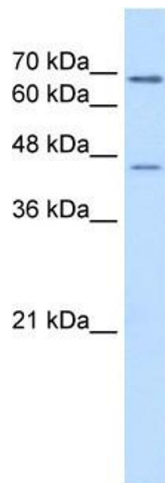
Storage: 4 °C/-20 °C

Storage Comment: Store at 2-8 °C for short periods. For longer periods of storage, store at -20 °C.



### Immunohistochemistry

**Image 1.** ALDH3A2 antibody was used for immunohistochemistry at a concentration of 4-8 ug/ml to stain Epithelial cells of renal tubule (arrows) in Human Kidney. Magnification is at 400X



### Western Blotting

**Image 2.** ALDH3A2 antibody used at 0.25 ug/ml to detect target protein.