

Datasheet for ABIN635696
anti-Sonic Hedgehog antibody



[Go to Product page](#)

2 Images

Overview

Quantity:	100 µL
Target:	Sonic Hedgehog (SHH)
Reactivity:	Human, Mouse, Zebrafish (Danio rerio), Dog
Host:	Rabbit
Clonality:	Polyclonal
Conjugate:	This Sonic Hedgehog antibody is un-conjugated
Application:	Western Blotting (WB), Immunohistochemistry (IHC)

Product Details

Immunogen:	Sonic Hedgehog antibody was raised using a synthetic peptide corresponding to a region with amino acids RCLLLVLVSSLLVCSGLACGPRGFGKRRHPKCLTPLAYKQFIPNVAEKT
Purification:	Affinity purified

Target Details

Target:	Sonic Hedgehog (SHH)
Alternative Name:	Sonic Hedgehog (SHH Products)
Background:	SHH is a protein that is instrumental in patterning the early embryo. It has been implicated as the key inductive signal in patterning of the ventral neural tube, the anterior-posterior limb axis, and the ventral somites. Defects in this protein or in its signalling pathway are a cause of holoprosencephaly (HPE). It is also thought that mutations in its gene or in its signalling pathway may be responsible for VACTERL syndrome, which is characterized by vertebral

Target Details

defects, anal atresia, tracheoesophageal fistula with esophageal atresia, radial and renal dysplasia, cardiac anomalies, and limb abnormalities.

Molecular Weight: 28 kDa (MW of target protein)

Pathways: [Hedgehog Signaling](#), [Dopaminergic Neurogenesis](#), [Regulation of Muscle Cell Differentiation](#), [Tube Formation](#), [Skeletal Muscle Fiber Development](#)

Application Details

Application Notes: WB: 1 µg/mL, IHC: 4-8 µg/mL
Optimal conditions should be determined by the investigator.

Comment: Sonic Hedgehog Blocking Peptide, catalog no. 33R-7837, is also available for use as a blocking control in assays to test for specificity of this Sonic Hedgehog antibody

Restrictions: For Research Use only

Handling

Format: Lyophilized

Reconstitution: Lyophilized powder. Add distilled water for a 1 mg/mL concentration of SHH antibody in PBS

Concentration: Lot specific

Buffer: PBS

Handling Advice: Avoid repeated freeze/thaw cycles.

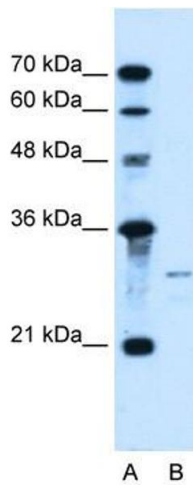
Storage: 4 °C/-20 °C

Storage Comment: Store at 2-8 °C for short periods. For longer periods of storage, store at -20 °C.



Immunohistochemistry

Image 1. Sonic Hedgehog antibody used at a dilution of 1:1000 to stain Chicken Embryos.



Western Blotting

Image 2. Sonic Hedgehog antibody used at 1 ug/ml to detect target protein.