

Datasheet for ABIN635698
anti-SEMA6D antibody (N-Term)



[Go to Product page](#)

1 Image

Overview

Quantity:	100 µL
Target:	SEMA6D
Binding Specificity:	N-Term
Reactivity:	Human, Mouse, Rat
Host:	Rabbit
Clonality:	Polyclonal
Conjugate:	This SEMA6D antibody is un-conjugated
Application:	Western Blotting (WB)

Product Details

Immunogen:	SEMA6 D antibody was raised using the N terminal of SEMA6 corresponding to a region with amino acids VSFPEDEPLNTVDYHYSRQYPVFRGRPSGNESQHRLDFQLMLKIRDTLY
Specificity:	SEMA6 D antibody was raised against the N terminal of SEMA6
Purification:	Affinity purified

Target Details

Target:	SEMA6D
Alternative Name:	SEMA6D (SEMA6D Products)
Background:	Semaphorins are a large family, including both secreted and membrane associated proteins, many of which have been implicated as inhibitors or chemorepellents in axon pathfinding, fasciculation and branching, and target selection. All semaphorins possess a semaphorin

Target Details

(Sema) domain and a PSI domain (found in plexins, semaphorins and integrins) in the N-terminal extracellular portion. Additional sequence motifs C-terminal to the semaphoring domain allow classification into distinct subfamilies. Results demonstrate that transmembrane semaphorins, like the secreted ones, can act as repulsive axon guidance cues. SEMA6D is a class 6 vertebrate transmembrane semaphorin that demonstrates alternative splicing.

Molecular Weight: 52 kDa (MW of target protein)

Pathways: [Smooth Muscle Cell Migration](#)

Application Details

Application Notes: WB: 0.5 µg/mL
Optimal conditions should be determined by the investigator.

Comment: SEMA6D Blocking Peptide, catalog no. 33R-9805, is also available for use as a blocking control in assays to test for specificity of this SEMA6D antibody

Restrictions: For Research Use only

Handling

Format: Lyophilized

Reconstitution: Lyophilized powder. Add distilled water for a 1 mg/mL concentration of SEMA0 antibody in PBS

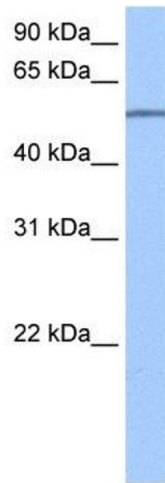
Concentration: Lot specific

Buffer: PBS

Handling Advice: Avoid repeated freeze/thaw cycles.
Dilute only prior to immediate use.

Storage: 4 °C/-20 °C

Storage Comment: Store at 2-8 °C for short periods. For longer periods of storage, store at -20 °C.



Western Blotting

Image 1. SEMA6D antibody used at 0.5 ug/ml to detect target protein.