

Datasheet for ABIN635702
anti-SEMA4B antibody (N-Term)



[Go to Product page](#)

1 Image

Overview

Quantity:	100 µL
Target:	SEMA4B
Binding Specificity:	N-Term
Reactivity:	Human, Mouse, Rat
Host:	Rabbit
Clonality:	Polyclonal
Conjugate:	This SEMA4B antibody is un-conjugated
Application:	Western Blotting (WB)

Product Details

Immunogen:	SEMA4 B antibody was raised using the N terminal of SEMA4 corresponding to a region with amino acids KGRCFPDPNFKSTALVVDGELYTGTVSSFQGNPAISRSQSLRPTKTESS
Specificity:	SEMA4 B antibody was raised against the N terminal of SEMA4
Purification:	Affinity purified

Target Details

Target:	SEMA4B
Alternative Name:	SEMA4B (SEMA4B Products)
Background:	SEMA4B is a single-pass type I membrane protein. It belongs to the semaphorin family. SEMA4B contains 1 Ig-like C2-type (immunoglobulin-like) domain, 1 PSI domain and 1 Sema domain. It inhibits axonal extension by providing local signals to specify territories inaccessible

Target Details

for growing axons.

Molecular Weight: 93 kDa (MW of target protein)

Application Details

Application Notes: WB: 1 µg/mL

Optimal conditions should be determined by the investigator.

Comment: SEMA4B Blocking Peptide, catalog no. 33R-4404, is also available for use as a blocking control in assays to test for specificity of this SEMA4B antibody

Restrictions: For Research Use only

Handling

Format: Lyophilized

Reconstitution: Lyophilized powder. Add distilled water for a 1 mg/mL concentration of SEMA0 antibody in PBS

Concentration: Lot specific

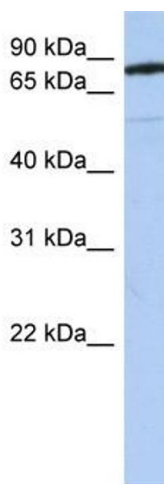
Buffer: PBS

Handling Advice: Avoid repeated freeze/thaw cycles.
Dilute only prior to immediate use.

Storage: 4 °C/-20 °C

Storage Comment: Store at 2-8 °C for short periods. For longer periods of storage, store at -20 °C.

Images



Western Blotting

Image 1. SEMA4B antibody used at 1 ug/ml to detect target protein.