

## Datasheet for ABIN635703 **anti-CYP46A1 antibody (C-Term)**



[Go to Product page](#)

### 1 Image

#### Overview

Quantity:	100 µL
Target:	CYP46A1
Binding Specificity:	C-Term
Reactivity:	Human, Mouse, Rat
Host:	Rabbit
Clonality:	Polyclonal
Conjugate:	This CYP46A1 antibody is un-conjugated
Application:	Western Blotting (WB)

#### Product Details

Immunogen:	CYP46 A1 antibody was raised using the C terminal of CYP46 1 corresponding to a region with amino acids YVMGRMDTYFEDPLTFNPDRFGPGAPKPRFTYFPFSLGHRSCIGQQFAQM
Specificity:	CYP46 A1 antibody was raised against the C terminal of CYP46 1
Purification:	Affinity purified

#### Target Details

Target:	CYP46A1
Alternative Name:	CYP46A1 ( <a href="#">CYP46A1 Products</a> )
Background:	CYP46A1 is a member of the cytochrome P450 superfamily of enzymes. The cytochrome P450 proteins are monooxygenases which catalyze many reactions involved in drug metabolism and synthesis of cholesterol, steroids and other lipids.

## Target Details

---

Molecular Weight: 57 kDa (MW of target protein)

## Application Details

---

Application Notes: WB: 1 µg/mL

Optimal conditions should be determined by the investigator.

Comment: CYP46A1 Blocking Peptide, catalog no. 33R-10280, is also available for use as a blocking control in assays to test for specificity of this CYP46A1 antibody

Restrictions: For Research Use only

## Handling

---

Format: Lyophilized

Reconstitution: Lyophilized powder. Add distilled water for a 1 mg/mL concentration of CYP40 1 antibody in PBS

Concentration: Lot specific

Buffer: PBS

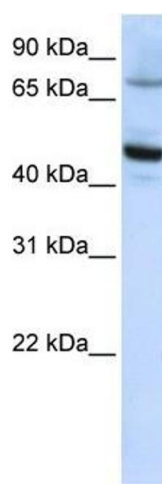
Handling Advice: Avoid repeated freeze/thaw cycles.  
Dilute only prior to immediate use.

Storage: 4 °C/-20 °C

Storage Comment: Store at 2-8 °C for short periods. For longer periods of storage, store at -20 °C.

## Images

---



### Western Blotting

**Image 1.** CYP46A1 antibody used at 1 ug/ml to detect target protein.