

Datasheet for ABIN635711 **anti-MTCH1 antibody**



[Go to Product page](#)

1 Image

Overview

Quantity:	100 µL
Target:	MTCH1
Reactivity:	Human, Mouse, Rat
Host:	Rabbit
Clonality:	Polyclonal
Conjugate:	This MTCH1 antibody is un-conjugated
Application:	Western Blotting (WB)

Product Details

Immunogen:	MTCH1 antibody was raised using a synthetic peptide corresponding to a region with amino acids NNCGLQAGLPPYSPVFKSWIHCWKYLSVQQLFRGSSLLFRRVSSGSCFA
Purification:	Affinity purified

Target Details

Target:	MTCH1
Alternative Name:	MTCH1 (MTCH1 Products)
Background:	MTCH1 is a potential mitochondrial transporter. It may play a role in apoptosis.
Molecular Weight:	40 kDa (MW of target protein)
Pathways:	Positive Regulation of Endopeptidase Activity , SARS-CoV-2 Protein Interactome

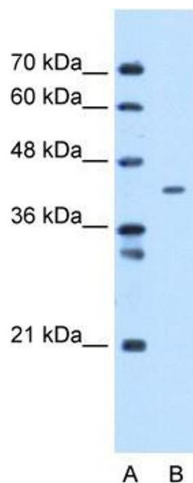
Application Details

Application Notes:	WB: 1 µg/mL Optimal conditions should be determined by the investigator.
Comment:	MTCH1 Blocking Peptide, catalog no. 33R-6803, is also available for use as a blocking control in assays to test for specificity of this MTCH1 antibody
Restrictions:	For Research Use only

Handling

Format:	Lyophilized
Reconstitution:	Lyophilized powder. Add distilled water for a 1 mg/mL concentration of MTCH1 antibody in PBS
Concentration:	Lot specific
Buffer:	PBS
Handling Advice:	Avoid repeated freeze/thaw cycles.
Storage:	4 °C/-20 °C
Storage Comment:	Store at 2-8 °C for short periods. For longer periods of storage, store at -20 °C.

Images



Western Blotting

Image 1. MTCH1 antibody used at 1 µg/ml to detect target protein.