

## Datasheet for ABIN635721 **anti-SLC39A5 antibody**

### 3 Images



[Go to Product page](#)

### Overview

Quantity:	100 µL
Target:	SLC39A5
Reactivity:	Human, Mouse, Rat
Host:	Rabbit
Clonality:	Polyclonal
Conjugate:	This SLC39A5 antibody is un-conjugated
Application:	Western Blotting (WB), Immunohistochemistry (IHC)

### Product Details

Immunogen:	SLC39 A5 antibody was raised using a synthetic peptide corresponding to a region with amino acids MGSPVSHLLAGFCVWVVLGWVGGSPVNLGPAEQEQNHLYLAQLFGLYGENG
Purification:	Affinity purified

### Target Details

Target:	SLC39A5
Alternative Name:	SLC39A5 ( <a href="#">SLC39A5 Products</a> )
Background:	Zinc is an essential cofactor for hundreds of enzymes. It is involved in protein, nucleic acid, carbohydrate, and lipid metabolism, as well as in the control of gene transcription, growth, development, and differentiation. SLC39A5 belongs to a subfamily of proteins that show structural characteristics of zinc transporters.
Molecular Weight:	56 kDa (MW of target protein)

## Target Details

Pathways: [Transition Metal Ion Homeostasis](#)

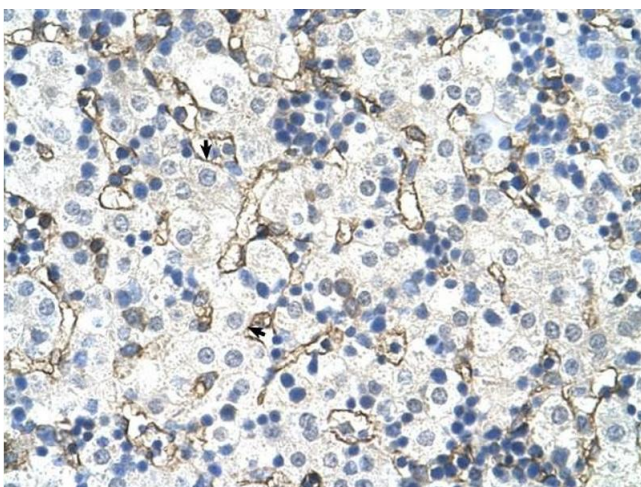
## Application Details

Application Notes:	WB: 0.5 µg/mL, IHC: 4-8 µg/mL Optimal conditions should be determined by the investigator.
Comment:	SLC39A5 Blocking Peptide, catalog no. 33R-6078, is also available for use as a blocking control in assays to test for specificity of this SLC39A5 antibody
Restrictions:	For Research Use only

## Handling

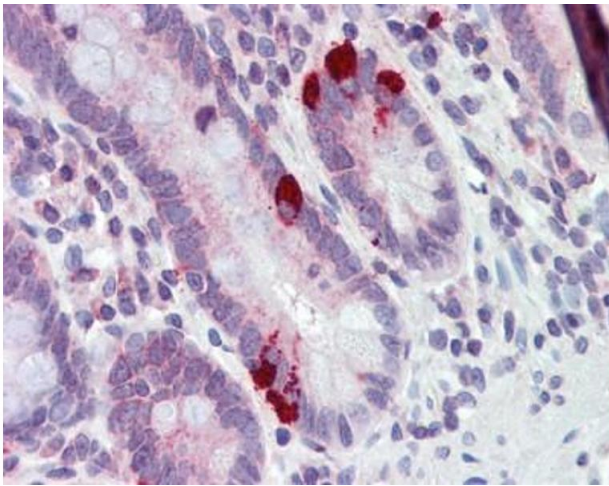
Format:	Lyophilized
Reconstitution:	Lyophilized powder. Add distilled water for a 1 mg/mL concentration of SLC30 5 antibody in PBS
Concentration:	Lot specific
Buffer:	PBS
Handling Advice:	Avoid repeated freeze/thaw cycles.
Storage:	4 °C/-20 °C
Storage Comment:	Store at 2-8 °C for short periods. For longer periods of storage, store at -20 °C.

## Images



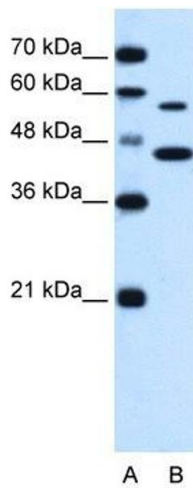
### Immunohistochemistry

**Image 1.** SLC39A5 antibody was used for immunohistochemistry at a concentration of 4-8 ug/ml to stain Hepatocytes (arrows) in Human Liver. Magnification is at 400X



### Immunohistochemistry

**Image 2.** SLC39A5 antibody was used for immunohistochemistry at a concentration of 4-8 ug/ml. Magnification is at 400X



### Western Blotting

**Image 3.** SLC39A5 antibody used at 0.5 ug/ml to detect target protein.