

Datasheet for ABIN635729 **anti-ABCA12 antibody**



[Go to Product page](#)

1 Image

Overview

Quantity:	100 µL
Target:	ABCA12
Reactivity:	Human
Host:	Rabbit
Clonality:	Polyclonal
Conjugate:	This ABCA12 antibody is un-conjugated
Application:	Western Blotting (WB)

Product Details

Immunogen:	ABCA12 antibody was raised using a synthetic peptide corresponding to a region with amino acids TTIFKMLTGDIIIPSSGNILIRNKTGSLGHVDSHSSLVGYCPQEDALDDL
Purification:	Affinity purified

Target Details

Target:	ABCA12
Alternative Name:	ABCA12 (ABCA12 Products)
Background:	The membrane-associated protein encoded by this gene is a member of the superfamily of ATP-binding cassette (ABC) transporters. ABC proteins transport various molecules across extra- and intracellular membranes.
Molecular Weight:	257 kDa (MW of target protein)

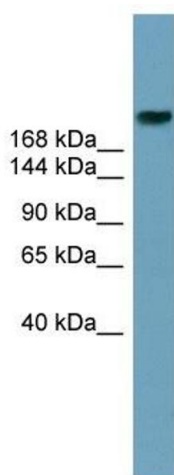
Application Details

Application Notes:	WB: 1 µg/mL Optimal conditions should be determined by the investigator.
Comment:	ABCA12 Blocking Peptide, catalog no. 33R-9318, is also available for use as a blocking control in assays to test for specificity of this ABCA12 antibody
Restrictions:	For Research Use only

Handling

Format:	Lyophilized
Reconstitution:	Lyophilized powder. Add distilled water for a 1 mg/mL concentration of ABCA12 antibody in PBS
Concentration:	Lot specific
Buffer:	PBS
Handling Advice:	Avoid repeated freeze/thaw cycles.
Storage:	4 °C/-20 °C
Storage Comment:	Store at 2-8 °C for short periods. For longer periods of storage, store at -20 °C.

Images



Western Blotting

Image 1. ABCA12 antibody used at 1 ug/ml to detect target protein.