

Datasheet for ABIN635732
anti-LRFN3 antibody (C-Term)



[Go to Product page](#)

1 Image

Overview

Quantity:	100 µL
Target:	LRFN3
Binding Specificity:	C-Term
Reactivity:	Human, Mouse, Rat
Host:	Rabbit
Clonality:	Polyclonal
Conjugate:	This LRFN3 antibody is un-conjugated
Application:	Western Blotting (WB)

Product Details

Immunogen:	LRFN3 antibody was raised using the C terminal of LRFN3 corresponding to a region with amino acids VYRMIPAESRSFLLTDLASGRTYDLCVLAVYEDSATGLTATRPVGCARFS
Specificity:	LRFN3 antibody was raised against the C terminal of LRFN3
Purification:	Affinity purified

Target Details

Target:	LRFN3
Alternative Name:	LRFN3 (LRFN3 Products)
Background:	LRFN3 belongs to the LRFN family. Its exact function remains unknown.
Molecular Weight:	66 kDa (MW of target protein)

Target Details

Pathways: [Synaptic Membrane](#)

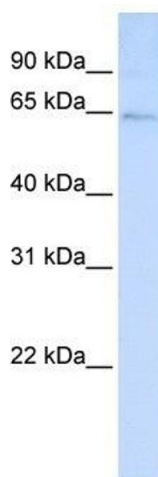
Application Details

Application Notes:	WB: 1 µg/mL Optimal conditions should be determined by the investigator.
Comment:	LRFN3 Blocking Peptide, catalog no. 33R-9926, is also available for use as a blocking control in assays to test for specificity of this LRFN3 antibody
Restrictions:	For Research Use only

Handling

Format:	Lyophilized
Reconstitution:	Lyophilized powder. Add distilled water for a 1 mg/mL concentration of LRFN3 antibody in PBS
Concentration:	Lot specific
Buffer:	PBS
Handling Advice:	Avoid repeated freeze/thaw cycles. Dilute only prior to immediate use.
Storage:	4 °C/-20 °C
Storage Comment:	Store at 2-8 °C for short periods. For longer periods of storage, store at -20 °C.

Images



Western Blotting

Image 1. LRFN3 antibody used at 1 ug/ml to detect target protein.