

Datasheet for ABIN635741 **anti-PAM antibody (N-Term)**



[Go to Product page](#)

1 Image

Overview

Quantity:	100 µL
Target:	PAM
Binding Specificity:	N-Term
Reactivity:	Human
Host:	Rabbit
Clonality:	Polyclonal
Conjugate:	This PAM antibody is un-conjugated
Application:	Western Blotting (WB)

Product Details

Immunogen:	PAM antibody was raised using the N terminal of PAM corresponding to a region with amino acids PKGVGFRVGGGETGSKYFVLQVHYGDISAFRDNNKDCSGVSLHLTRLPQPL
Specificity:	PAM antibody was raised against the N terminal of PAM
Purification:	Affinity purified

Target Details

Target:	PAM
Alternative Name:	PAM (PAM Products)
Background:	PAM is a multifunctional protein. It has two enzymatically active domains with catalytic activities-peptidylglycine alpha-hydroxylating monooxygenase (PHM) and peptidyl-alpha-hydroxyglycine alpha-amidating lyase (PAL). These catalytic domains work sequentially to

Target Details

catalyze neuroendocrine peptides to active alpha-amidated products.

Molecular Weight: 108 kDa (MW of target protein)

Application Details

Application Notes: WB: 1 µg/mL

Optimal conditions should be determined by the investigator.

Comment: PAM Blocking Peptide, catalog no. 33R-7169, is also available for use as a blocking control in assays to test for specificity of this PAM antibody

Restrictions: For Research Use only

Handling

Format: Lyophilized

Reconstitution: Lyophilized powder. Add distilled water for a 1 mg/mL concentration of PAM antibody in PBS

Concentration: Lot specific

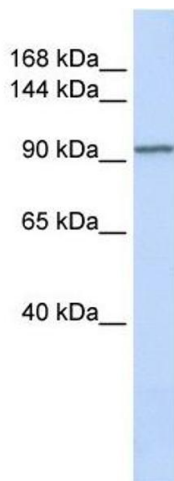
Buffer: PBS

Handling Advice: Avoid repeated freeze/thaw cycles.
Dilute only prior to immediate use.

Storage: 4 °C/-20 °C

Storage Comment: Store at 2-8 °C for short periods. For longer periods of storage, store at -20 °C.

Images



Western Blotting

Image 1. PAM antibody used at 1 µg/ml to detect target protein.