

Datasheet for ABIN635747
anti-LIM2 antibody (N-Term)



[Go to Product page](#)

1 Image

Overview

Quantity:	100 µL
Target:	LIM2
Binding Specificity:	N-Term
Reactivity:	Human
Host:	Rabbit
Clonality:	Polyclonal
Conjugate:	This LIM2 antibody is un-conjugated
Application:	Western Blotting (WB)

Product Details

Immunogen:	LIM2 antibody was raised using the N terminal of LIM2 corresponding to a region with amino acids GSFHQGLWRYCLGNKCYLQTDSIGEPGQGPRAWGKSRADLGAQGHLY
Specificity:	LIM2 antibody was raised against the N terminal of LIM2
Purification:	Affinity purified

Target Details

Target:	LIM2
Alternative Name:	LIM2 (LIM2 Products)
Background:	This gene encodes an eye lens-specific protein found at the junctions of lens fiber cells, where it may contribute to cell junctional organization.

Target Details

Molecular Weight: 24 kDa (MW of target protein)

Pathways: [Cell-Cell Junction Organization](#)

Application Details

Application Notes: WB: 1 µg/mL

Optimal conditions should be determined by the investigator.

Comment: LIM2 Blocking Peptide, catalog no. 33R-3559, is also available for use as a blocking control in assays to test for specificity of this LIM2 antibody

Restrictions: For Research Use only

Handling

Format: Lyophilized

Reconstitution: Lyophilized powder. Add distilled water for a 1 mg/mL concentration of LIM2 antibody in PBS

Concentration: Lot specific

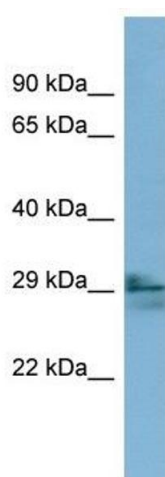
Buffer: PBS

Handling Advice: Avoid repeated freeze/thaw cycles.
Dilute only prior to immediate use.

Storage: 4 °C/-20 °C

Storage Comment: Store at 2-8 °C for short periods. For longer periods of storage, store at -20 °C.

Images



Western Blotting

Image 1. LIM2 antibody used at 1 µg/ml to detect target protein.