

Datasheet for ABIN635755
anti-WNT6 antibody (Middle Region)



[Go to Product page](#)

1 Image

Overview

Quantity:	100 µL
Target:	WNT6
Binding Specificity:	Middle Region
Reactivity:	Human, Mouse, Rat
Host:	Rabbit
Clonality:	Polyclonal
Conjugate:	This WNT6 antibody is un-conjugated
Application:	Western Blotting (WB)

Product Details

Immunogen:	WNT6 antibody was raised using the middle region of WNT6 corresponding to a region with amino acids ERFHGASRVMTNDGKALLPAVRTLKPPGRADLLYAADSPDFCAPNRRTG
Specificity:	WNT6 antibody was raised against the middle region of WNT6
Purification:	Affinity purified

Target Details

Target:	WNT6
Alternative Name:	WNT6 (WNT6 Products)
Background:	The WNT family consists of several secreted signaling proteins. These proteins have been implicated in oncogenesis and in several developmental processes, including regulation of cell fate and patterning during embryogenesis. WNT6 is overexpressed in cervical cancer cell line

Target Details

and strongly coexpressed with another family member, WNT10A, in colorectal cancer cell line.
The WNT6 protein overexpression may play key roles in carcinogenesis.

Molecular Weight: 37 kDa (MW of target protein)

Pathways: [WNT Signaling](#), [Tube Formation](#)

Application Details

Application Notes: WB: 1 µg/mL
Optimal conditions should be determined by the investigator.

Comment: WNT6 Blocking Peptide, catalog no. 33R-2692, is also available for use as a blocking control in assays to test for specificity of this WNT6 antibody

Restrictions: For Research Use only

Handling

Format: Lyophilized

Reconstitution: Lyophilized powder. Add distilled water for a 1 mg/mL concentration of WNT6 antibody in PBS

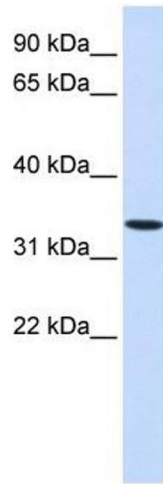
Concentration: Lot specific

Buffer: PBS

Handling Advice: Avoid repeated freeze/thaw cycles.
Dilute only prior to immediate use.

Storage: 4 °C/-20 °C

Storage Comment: Store at 2-8 °C for short periods. For longer periods of storage, store at -20 °C.



Western Blotting

Image 1. WNT6 antibody used at 1 ug/ml to detect target protein.