

Datasheet for ABIN635758
anti-Tetraspanin 5 antibody (Middle Region)



[Go to Product page](#)

3 Images

Overview

Quantity:	100 µL
Target:	Tetraspanin 5 (TSPAN5)
Binding Specificity:	Middle Region
Reactivity:	Human, Mouse, Rat, Dog
Host:	Rabbit
Clonality:	Polyclonal
Conjugate:	This Tetraspanin 5 antibody is un-conjugated
Application:	Western Blotting (WB), Immunohistochemistry (IHC)

Product Details

Immunogen:	Tetraspanin 5 antibody was raised using the middle region of TSPAN5 corresponding to a region with amino acids ASRERCGVPFSCCTKDP AEDVINTQCGYDARQKPEVDQQIVIYTKGCVPQ
Specificity:	Tetraspanin 5 antibody was raised against the middle region of TSPAN5
Purification:	Affinity purified

Target Details

Target:	Tetraspanin 5 (TSPAN5)
Alternative Name:	Tetraspanin 5 (TSPAN5 Products)
Background:	TSPAN5 is a member of the transmembrane 4 superfamily, also known as the tetraspanin family. Most of these members are cell-surface proteins that are characterized by the presence of four hydrophobic domains. The proteins mediate signal transduction events that play a role

Target Details

in the regulation of cell development, activation, growth and motility.

Molecular Weight: 30 kDa (MW of target protein)

Application Details

Application Notes: WB: 0.25 µg/mL, IHC: 4-8 µg/mL
Optimal conditions should be determined by the investigator.

Comment: Tetraspanin 5 Blocking Peptide, catalog no. 33R-1526, is also available for use as a blocking control in assays to test for specificity of this Tetraspanin 5 antibody

Restrictions: For Research Use only

Handling

Format: Lyophilized

Reconstitution: Lyophilized powder. Add distilled water for a 1 mg/mL concentration of TSPAN5 antibody in PBS

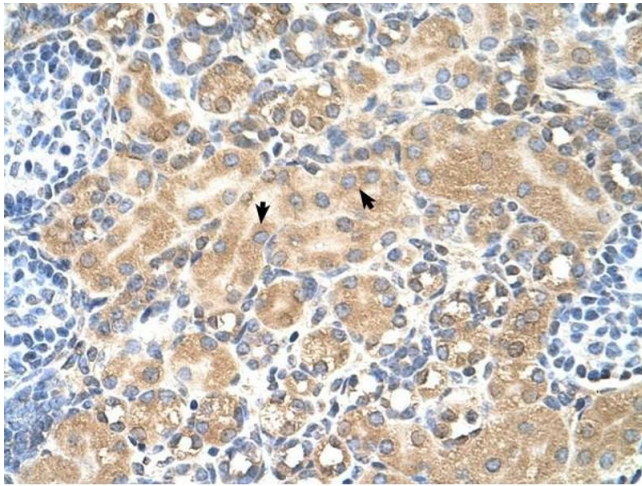
Concentration: Lot specific

Buffer: PBS

Handling Advice: Avoid repeated freeze/thaw cycles.
Dilute only prior to immediate use.

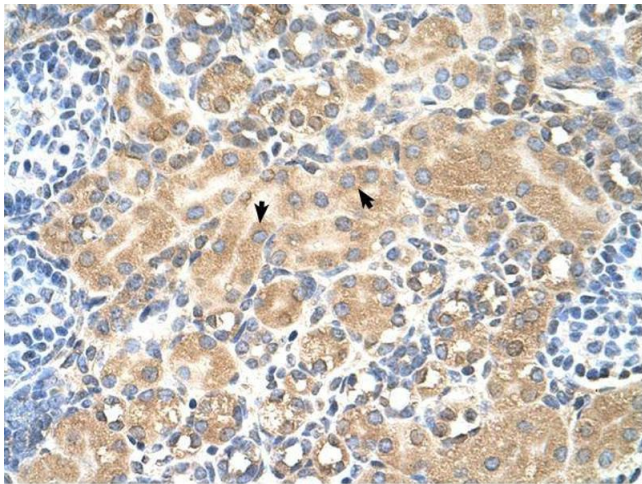
Storage: 4 °C/-20 °C

Storage Comment: Store at 2-8 °C for short periods. For longer periods of storage, store at -20 °C.



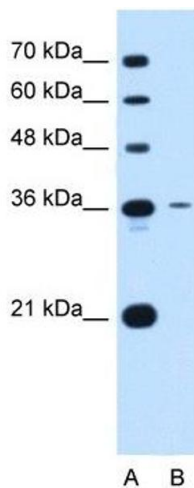
Immunohistochemistry

Image 1. Tetraspanin 5 antibody was used for immunohistochemistry at a concentration of 4-8 ug/ml to stain Epithelial cells of renal tubule (arrows) in Human Kidney. Magnification is at 400X



Immunohistochemistry

Image 2. Tetraspanin 5 antibody was used for immunohistochemistry at a concentration of 4-8 ug/ml. Magnification is at 400X



Western Blotting

Image 3. Tetraspanin 5 antibody used at 0.25 ug/ml to detect target protein.