

Datasheet for ABIN635761  
**anti-TSPAN12 antibody (Middle Region)**



[Go to Product page](#)

1 Image

## Overview

Quantity:	100 µL
Target:	TSPAN12
Binding Specificity:	Middle Region
Reactivity:	Human, Rat, Mouse, Dog
Host:	Rabbit
Clonality:	Polyclonal
Conjugate:	This TSPAN12 antibody is un-conjugated
Application:	Western Blotting (WB)

## Product Details

Immunogen:	Tetraspanin 12 antibody was raised using the middle region of TSPAN12 corresponding to a region with amino acids EFPGCSKQAHQEDLSLDLYQEGCGKKMYSFLRGTKQLQVLRFLGISIGVTQ
Specificity:	Tetraspanin 12 antibody was raised against the middle region of TSPAN12
Purification:	Affinity purified

## Target Details

Target:	TSPAN12
Alternative Name:	Tetraspanin 12 ( <a href="#">TSPAN12 Products</a> )
Background:	TSPAN12 is a member of the transmembrane 4 superfamily, also known as the tetraspanin family. Most of these members are cell-surface proteins that are characterized by the presence of four hydrophobic domains. The proteins mediate signal transduction events that play a role

## Target Details

---

in the regulation of cell development, activation, growth and motility.

Molecular Weight: 35 kDa (MW of target protein)

## Application Details

---

Application Notes: WB: 0.25 µg/mL  
Optimal conditions should be determined by the investigator.

Comment: Tetraspanin 12 Blocking Peptide, catalog no. 33R-2410, is also available for use as a blocking control in assays to test for specificity of this Tetraspanin 12 antibody

Restrictions: For Research Use only

## Handling

---

Format: Lyophilized

Reconstitution: Lyophilized powder. Add distilled water for a 1 mg/mL concentration of TSPAN12 antibody in PBS

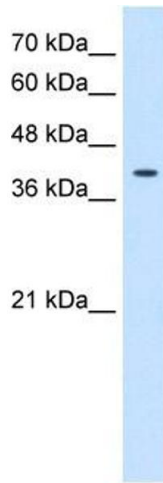
Concentration: Lot specific

Buffer: PBS

Handling Advice: Avoid repeated freeze/thaw cycles.  
Dilute only prior to immediate use.

Storage: 4 °C/-20 °C

Storage Comment: Store at 2-8 °C for short periods. For longer periods of storage, store at -20 °C.



### Western Blotting

**Image 1.** Tetraspanin 12 antibody used at 0.25 ug/ml to detect target protein.