

## Datasheet for ABIN635764 **anti-ZP4 antibody (N-Term)**



[Go to Product page](#)

### 1 Image

#### Overview

Quantity:	100 µL
Target:	ZP4
Binding Specificity:	N-Term
Reactivity:	Human
Host:	Rabbit
Clonality:	Polyclonal
Conjugate:	This ZP4 antibody is un-conjugated
Application:	Western Blotting (WB)

#### Product Details

Immunogen:	ZP4 antibody was raised using the N terminal of ZP4 corresponding to a region with amino acids MWLLRCVLLCVSLSLAVSGQHKPEAPDYSSVLHCGPWSFQFAVNLNQEAT
Specificity:	ZP4 antibody was raised against the N terminal of ZP4
Purification:	Affinity purified

#### Target Details

Target:	ZP4
Alternative Name:	ZP4 ( <a href="#">ZP4 Products</a> )
Background:	The zona pellucida is an extracellular matrix that surrounds the oocyte and early embryo. It is composed primarily of three or four glycoproteins with various functions during fertilization and preimplantation development. It is hypothesized that furin cleavage results in release of the

## Target Details

---

mature protein from the plasma membrane for subsequent incorporation into the zona pellucida matrix.

Molecular Weight: 49 kDa (MW of target protein)

## Application Details

---

Application Notes: WB: 0.5 µg/mL  
Optimal conditions should be determined by the investigator.

Comment: ZP4 Blocking Peptide, catalog no. 33R-6616, is also available for use as a blocking control in assays to test for specificity of this ZP4 antibody

Restrictions: For Research Use only

## Handling

---

Format: Lyophilized

Reconstitution: Lyophilized powder. Add distilled water for a 1 mg/mL concentration of ZP4 antibody in PBS

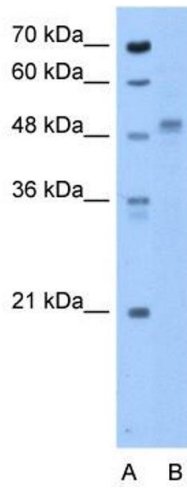
Concentration: Lot specific

Buffer: PBS

Handling Advice: Avoid repeated freeze/thaw cycles.  
Dilute only prior to immediate use.

Storage: 4 °C/-20 °C

Storage Comment: Store at 2-8 °C for short periods. For longer periods of storage, store at -20 °C.



### Western Blotting

**Image 1.** ZP4 antibody used at 0.5 ug/ml to detect target protein.