

Datasheet for ABIN635767 **anti-SMPD3 antibody**



[Go to Product page](#)

1 Image

Overview

| | |
|--------------|--------------------------------------|
| Quantity: | 100 µL |
| Target: | SMPD3 |
| Reactivity: | Human, Mouse, Rat |
| Host: | Rabbit |
| Clonality: | Polyclonal |
| Conjugate: | This SMPD3 antibody is un-conjugated |
| Application: | Western Blotting (WB) |

Product Details

| | |
|---------------|---|
| Immunogen: | SMPD3 antibody was raised using a synthetic peptide corresponding to a region with amino acids RPPEADDPVPGGQARNGAGGGPRGQTPNHNQDGDGSGSLGSPSASRESLV |
| Purification: | Affinity purified |

Target Details

| | |
|-------------------|---|
| Target: | SMPD3 |
| Alternative Name: | SMPD3 (SMPD3 Products) |
| Background: | SMPD3 catalyzes the hydrolysis of sphingomyelin to form ceramide and phosphocholine. Ceramide mediates numerous cellular functions, such as apoptosis and growth arrest, and is capable of regulating these 2 cellular events independently. Also hydrolyzes sphingosylphosphocholine. SMPD3 regulates the cell cycle by acting as a growth suppressor in confluent cells. It probably acts as a regulator of postnatal development and participates in |

Target Details

bone and dentin mineralization.

Molecular Weight: 71 kDa (MW of target protein)

Pathways: [Hormone Transport](#)

Application Details

Application Notes: WB: 1 µg/mL

Optimal conditions should be determined by the investigator.

Comment: SMPD3 Blocking Peptide, catalog no. 33R-8099, is also available for use as a blocking control in assays to test for specificity of this SMPD3 antibody

Restrictions: For Research Use only

Handling

Format: Lyophilized

Reconstitution: Lyophilized powder. Add distilled water for a 1 mg/mL concentration of SMPD3 antibody in PBS

Concentration: Lot specific

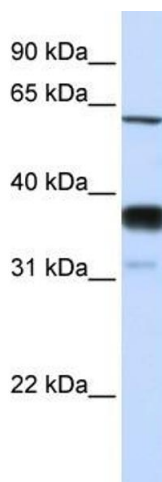
Buffer: PBS

Handling Advice: Avoid repeated freeze/thaw cycles.

Storage: 4 °C/-20 °C

Storage Comment: Store at 2-8 °C for short periods. For longer periods of storage, store at -20 °C.

Images



Western Blotting

Image 1. SMPD3 antibody used at 1 µg/ml to detect target protein.