

Datasheet for ABIN635774 **anti-FCRLA antibody (C-Term)**



[Go to Product page](#)

1 Image

Overview

Quantity:	100 µL
Target:	FCRLA
Binding Specificity:	C-Term
Reactivity:	Human
Host:	Rabbit
Clonality:	Polyclonal
Conjugate:	This FCRLA antibody is un-conjugated
Application:	Western Blotting (WB)

Product Details

Immunogen:	FCRLA antibody was raised using the C terminal of FCRLA corresponding to a region with amino acids MPDPHLYHQMGLLLKHMQDVRVLLGHLLMELRELSGHRKPGTTKATAE
Specificity:	FCRLA antibody was raised against the C terminal of FCRLA
Purification:	Affinity purified

Target Details

Target:	FCRLA
Alternative Name:	FCRLA (FCRLA Products)
Background:	Receptors for the Fc fragment of IgG, or FcGRs, are cell surface glycoproteins of the Ig superfamily (IgSF). These receptors mediate phagocytosis of IgG-coated pathogens and promote activation of effector cells, leading to inflammatory responses and antibody-mediated

Target Details

cellular cytotoxicity. FCRLA may be implicated in B-cell differentiation and lymphomagenesis.

Molecular Weight: 41 kDa (MW of target protein)

Application Details

Application Notes: WB: 1 µg/mL

Optimal conditions should be determined by the investigator.

Comment: FCRLA Blocking Peptide, catalog no. 33R-6273, is also available for use as a blocking control in assays to test for specificity of this FCRLA antibody

Restrictions: For Research Use only

Handling

Format: Lyophilized

Reconstitution: Lyophilized powder. Add distilled water for a 1 mg/mL concentration of FCRLA antibody in PBS

Concentration: Lot specific

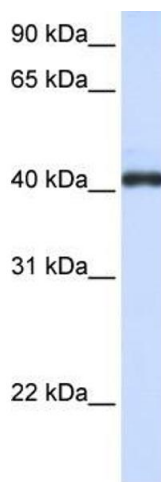
Buffer: PBS

Handling Advice: Avoid repeated freeze/thaw cycles.
Dilute only prior to immediate use.

Storage: 4 °C/-20 °C

Storage Comment: Store at 2-8 °C for short periods. For longer periods of storage, store at -20 °C.

Images



Western Blotting

Image 1. FCRLA antibody used at 1 µg/ml to detect target protein.