

Datasheet for ABIN635778  
**anti-SI antibody**



[Go to Product page](#)

1 Image

## Overview

|              |                                   |
|--------------|-----------------------------------|
| Quantity:    | 100 µL                            |
| Target:      | SI                                |
| Reactivity:  | Human                             |
| Host:        | Rabbit                            |
| Clonality:   | Polyclonal                        |
| Conjugate:   | This SI antibody is un-conjugated |
| Application: | Western Blotting (WB)             |

## Product Details

|               |                                                                                                                                                 |
|---------------|-------------------------------------------------------------------------------------------------------------------------------------------------|
| Immunogen:    | SI antibody was raised using a synthetic peptide corresponding to a region with amino acids NSVLFTTQNQTPNRRFRFKITDPNNRRYEVPHQYVKEFTGPTVSDTLVDVK |
| Purification: | Affinity purified                                                                                                                               |

## Target Details

|                   |                                                                                                                          |
|-------------------|--------------------------------------------------------------------------------------------------------------------------|
| Target:           | SI                                                                                                                       |
| Abstract:         | <a href="#">SI Products</a>                                                                                              |
| Background:       | SI belongs to the glycosyl hydrolase 31 family. It plays an important role in the final stage of carbohydrate digestion. |
| Molecular Weight: | 209 kDa (MW of target protein)                                                                                           |

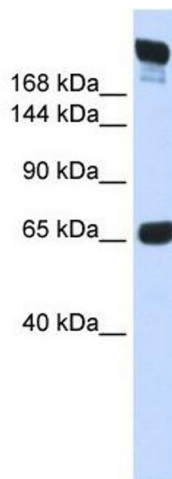
## Application Details

|                    |                                                                                                                                                  |
|--------------------|--------------------------------------------------------------------------------------------------------------------------------------------------|
| Application Notes: | WB: 1 µg/mL<br>Optimal conditions should be determined by the investigator.                                                                      |
| Comment:           | SI Blocking Peptide, catalog no. 33R-6891, is also available for use as a blocking control in assays to test for specificity of this SI antibody |
| Restrictions:      | For Research Use only                                                                                                                            |

## Handling

|                  |                                                                                           |
|------------------|-------------------------------------------------------------------------------------------|
| Format:          | Lyophilized                                                                               |
| Reconstitution:  | Lyophilized powder. Add distilled water for a 1 mg/mL concentration of SI antibody in PBS |
| Concentration:   | Lot specific                                                                              |
| Buffer:          | PBS                                                                                       |
| Handling Advice: | Avoid repeated freeze/thaw cycles.                                                        |
| Storage:         | 4 °C/-20 °C                                                                               |
| Storage Comment: | Store at 2-8 °C for short periods. For longer periods of storage, store at -20 °C.        |

## Images



### Western Blotting

**Image 1.** SI antibody used at 1 ug/ml to detect target protein.