

Datasheet for ABIN635797  
**anti-SLAMF6 antibody (N-Term)**



[Go to Product page](#)

1 Image

## Overview

Quantity:	100 µL
Target:	SLAMF6
Binding Specificity:	N-Term
Reactivity:	Human
Host:	Rabbit
Clonality:	Polyclonal
Conjugate:	This SLAMF6 antibody is un-conjugated
Application:	Western Blotting (WB)

## Product Details

Immunogen:	SLAMF6 antibody was raised using the N terminal of SLAMF6 corresponding to a region with amino acids NFITWLFNETSLAFIVPHETKSPEIHVTNPKQGKRLNFTQSYSLQLSNLK
Specificity:	SLAMF6 antibody was raised against the N terminal of SLAMF6
Purification:	Affinity purified

## Target Details

Target:	SLAMF6
Alternative Name:	SLAMF6 ( <a href="#">SLAMF6 Products</a> )
Background:	SLAMF6 is a type I transmembrane protein, belonging to the CD2 subfamily of the immunoglobulin superfamily. SLAMF6 is expressed on Natural killer (NK), T, and B lymphocytes. It undergoes tyrosine phosphorylation and associates with the Src homology 2

## Target Details

---

domain-containing protein (SH2D1A) as well as with SH2 domain-containing phosphatases (SHPs). It may function as a coreceptor in the process of NK cell activation. It can also mediate inhibitory signals in NK cells from X-linked lymphoproliferative patients.

Molecular Weight: 34 kDa (MW of target protein)

## Application Details

---

Application Notes: WB: 1 µg/mL  
Optimal conditions should be determined by the investigator.

Comment: SLAMF6 Blocking Peptide, catalog no. 33R-6685, is also available for use as a blocking control in assays to test for specificity of this SLAMF6 antibody

Restrictions: For Research Use only

## Handling

---

Format: Lyophilized

Reconstitution: Lyophilized powder. Add distilled water for a 1 mg/mL concentration of SLAMF6 antibody in PBS

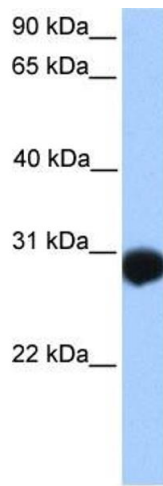
Concentration: Lot specific

Buffer: PBS

Handling Advice: Avoid repeated freeze/thaw cycles.  
Dilute only prior to immediate use.

Storage: 4 °C/-20 °C

Storage Comment: Store at 2-8 °C for short periods. For longer periods of storage, store at -20 °C.



### Western Blotting

**Image 1.** SLAMF6 antibody used at 1 ug/ml to detect target protein.