

Datasheet for ABIN635806
anti-ISLR2 antibody (N-Term)



[Go to Product page](#)

1 Image

Overview

Quantity:	100 µL
Target:	ISLR2
Binding Specificity:	N-Term
Reactivity:	Mouse, Human, Rat
Host:	Rabbit
Clonality:	Polyclonal
Conjugate:	This ISLR2 antibody is un-conjugated
Application:	Western Blotting (WB)

Product Details

Immunogen:	ISLR2 antibody was raised using the N terminal of ISLR2 corresponding to a region with amino acids PFHCGGLVWLQAWAASTRVSLPEPDSIACASPPALQGVPVYRLPALPCA
Specificity:	ISLR2 antibody was raised against the N terminal of ISLR2
Purification:	Affinity purified

Target Details

Target:	ISLR2
Alternative Name:	ISLR2 (ISLR2 Products)
Background:	ISLR2 is a single-pass membrane protein. It contains 1 Ig-like (immunoglobulin-like) domain and 5 LRR (leucine-rich) repeats. The exact function of ISLR2 remains unknown.

Target Details

Molecular Weight: 79 kDa (MW of target protein)

Pathways: [Regulation of Cell Size](#)

Application Details

Application Notes: WB: 1 µg/mL
Optimal conditions should be determined by the investigator.

Comment: ISLR2 Blocking Peptide, catalog no. 33R-7074, is also available for use as a blocking control in assays to test for specificity of this ISLR2 antibody

Restrictions: For Research Use only

Handling

Format: Lyophilized

Reconstitution: Lyophilized powder. Add distilled water for a 1 mg/mL concentration of ISLR2 antibody in PBS

Concentration: Lot specific

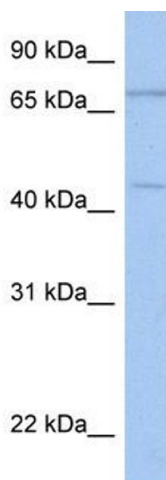
Buffer: PBS

Handling Advice: Avoid repeated freeze/thaw cycles.
Dilute only prior to immediate use.

Storage: 4 °C/-20 °C

Storage Comment: Store at 2-8 °C for short periods. For longer periods of storage, store at -20 °C.

Images



Western Blotting

Image 1. ISLR2 antibody used at 1 µg/ml to detect target protein.