

Datasheet for ABIN635811
anti-BTN2A1 antibody (N-Term)



[Go to Product page](#)

1 Image

Overview

Quantity:	100 µL
Target:	BTN2A1
Binding Specificity:	N-Term
Reactivity:	Human
Host:	Rabbit
Clonality:	Polyclonal
Conjugate:	This BTN2A1 antibody is un-conjugated
Application:	Western Blotting (WB)

Product Details

Immunogen:	BTN2 A1 antibody was raised using the N terminal of BTN2 1 corresponding to a region with amino acids SVALVIHNITAQENGTYRCYFQEGRSYDEAILHLVAVAGLGSKPLISMRGH
Specificity:	BTN2 A1 antibody was raised against the N terminal of BTN2 1
Purification:	Affinity purified

Target Details

Target:	BTN2A1
Alternative Name:	BTN2A1 (BTN2A1 Products)
Background:	This gene is a member of the BTN2 subfamily of genes, which encode proteins belonging to the butyrophilin protein family. The gene is located in a cluster on chromosome 6, consisting of seven genes belonging to the expanding B7/butyrophilin-like group, a subset of the

Target Details

immunoglobulin gene superfamily. The encoded protein is an integral plasma membrane B box protein involved in lipid, fatty-acid and sterol metabolism.

Molecular Weight: 57 kDa (MW of target protein)

Pathways: [Activated T Cell Proliferation](#)

Application Details

Application Notes: WB: 1 µg/mL
Optimal conditions should be determined by the investigator.

Comment: BTN2A1 Blocking Peptide, catalog no. 33R-8900, is also available for use as a blocking control in assays to test for specificity of this BTN2A1 antibody

Restrictions: For Research Use only

Handling

Format: Lyophilized

Reconstitution: Lyophilized powder. Add distilled water for a 1 mg/mL concentration of BTN0 1 antibody in PBS

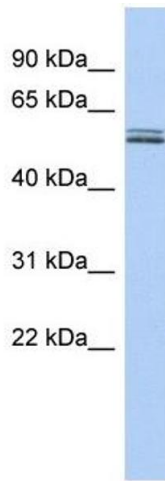
Concentration: Lot specific

Buffer: PBS

Handling Advice: Avoid repeated freeze/thaw cycles.
Dilute only prior to immediate use.

Storage: 4 °C/-20 °C

Storage Comment: Store at 2-8 °C for short periods. For longer periods of storage, store at -20 °C.



Western Blotting

Image 1. BTN2A1 antibody used at 1 ug/ml to detect target protein.