

Datasheet for ABIN635834

**anti-IGF-like family receptor 1 (IGFLR1) (N-Term) antibody**[Go to Product page](#)**1** Image

## Overview

Quantity:	100 µL
Target:	IGF-like family receptor 1 (IGFLR1)
Binding Specificity:	N-Term
Reactivity:	Human
Host:	Rabbit
Clonality:	Polyclonal
Conjugate:	Un-conjugated
Application:	Western Blotting (WB)

## Product Details

Immunogen:	TMEM149 antibody was raised using the N terminal of TMEM149 corresponding to a region with amino acids WRCRERPVPAKGHCPLTPGNPGAPSSQERSSPASSIAWRTPEPVPQQAWP
Specificity:	TMEM149 antibody was raised against the N terminal of TMEM149
Purification:	Affinity purified

## Target Details

Target:	IGF-like family receptor 1 (IGFLR1)
Alternative Name:	TMEM149 ( <a href="#">IGFLR1 Products</a> )
Background:	TMEM149 is a single-pass type I membrane protein. The exact function of TMEM149 remains unknown.

## Target Details

---

Molecular Weight: 38 kDa (MW of target protein)

## Application Details

---

Application Notes: WB: 1 µg/mL  
Optimal conditions should be determined by the investigator.

Comment: TMEM149 Blocking Peptide, catalog no. 33R-9996, is also available for use as a blocking control in assays to test for specificity of this TMEM149 antibody

Restrictions: For Research Use only

## Handling

---

Format: Lyophilized

Reconstitution: Lyophilized powder. Add distilled water for a 1 mg/mL concentration of TMEM149 antibody in PBS

Concentration: Lot specific

Buffer: PBS

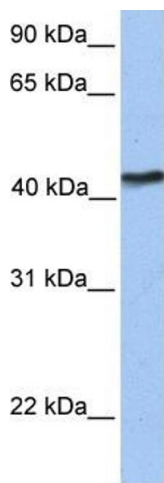
Handling Advice: Avoid repeated freeze/thaw cycles.  
Dilute only prior to immediate use.

Storage: 4 °C/-20 °C

Storage Comment: Store at 2-8 °C for short periods. For longer periods of storage, store at -20 °C.

## Images

---



### Western Blotting

**Image 1.** TMEM149 antibody used at 1 ug/ml to detect target protein.