

Datasheet for ABIN635846
anti-TMEFF1 antibody (Middle Region)



[Go to Product page](#)

1 Image

Overview

Quantity:	100 µL
Target:	TMEFF1
Binding Specificity:	Middle Region
Reactivity:	Human, Rat, Mouse
Host:	Rabbit
Clonality:	Polyclonal
Conjugate:	This TMEFF1 antibody is un-conjugated
Application:	Western Blotting (WB)

Product Details

Immunogen:	TMEFF1 antibody was raised using the middle region of TMEFF1 corresponding to a region with amino acids YSDNGSGSGEGEEEEGSGAEVHRKHSKCGPCKYKAECDEDAENVGVCNID
Specificity:	TMEFF1 antibody was raised against the middle region of TMEFF1
Purification:	Affinity purified

Target Details

Target:	TMEFF1
Alternative Name:	TMEFF1 (TMEFF1 Products)
Background:	TMEFF1 may inhibit NODAL and BMP signaling during neural patterning. It may be a tumor suppressor in brain cancers.

Target Details

Molecular Weight: 41 kDa (MW of target protein)

Application Details

Application Notes: WB: 1 µg/mL
Optimal conditions should be determined by the investigator.

Comment: TMEFF1 Blocking Peptide, catalog no. 33R-10238, is also available for use as a blocking control in assays to test for specificity of this TMEFF1 antibody

Restrictions: For Research Use only

Handling

Format: Lyophilized

Reconstitution: Lyophilized powder. Add distilled water for a 1 mg/mL concentration of TMEFF1 antibody in PBS

Concentration: Lot specific

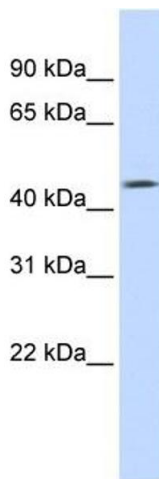
Buffer: PBS

Handling Advice: Avoid repeated freeze/thaw cycles.
Dilute only prior to immediate use.

Storage: 4 °C/-20 °C

Storage Comment: Store at 2-8 °C for short periods. For longer periods of storage, store at -20 °C.

Images



Western Blotting

Image 1. TMEFF1 antibody used at 1 ug/ml to detect target protein.