

Datasheet for ABIN635849 **anti-BACE1 antibody (N-Term)**

3 Images



[Go to Product page](#)

Overview

Quantity:	100 µL
Target:	BACE1
Binding Specificity:	N-Term
Reactivity:	Human, Mouse, Rat
Host:	Rabbit
Clonality:	Polyclonal
Conjugate:	This BACE1 antibody is un-conjugated
Application:	Western Blotting (WB)

Product Details

Immunogen:	BACE1 antibody was raised using the N terminal of BACE1 corresponding to a region with amino acids GQGYVEMTVGSPQTLNILVDTGSSNFAVGAAPHPFLHRYRQLSSTY
Specificity:	BACE1 antibody was raised against the N terminal of BACE1
Purification:	Affinity purified

Target Details

Target:	BACE1
Alternative Name:	BACE1 (BACE1 Products)
Background:	Cerebral deposition of amyloid beta peptide is an early and critical feature of Alzheimer's disease. Amyloid beta peptide is generated by proteolytic cleavage of amyloid precursor protein (APP) by two proteases, one of which is the protein. BACE1, a member of the peptidase A1

Target Details

protein family, is a type I integral membrane glycoprotein and aspartic protease that is found mainly in the Golgi.

Molecular Weight: 51 kDa (MW of target protein)

Application Details

Application Notes: WB: 1 µg/mL
Optimal conditions should be determined by the investigator.

Comment: BACE1 Blocking Peptide, catalog no. 33R-3496, is also available for use as a blocking control in assays to test for specificity of this BACE1 antibody

Restrictions: For Research Use only

Handling

Format: Lyophilized

Reconstitution: Lyophilized powder. Add distilled water for a 1 mg/mL concentration of BACE1 antibody in PBS

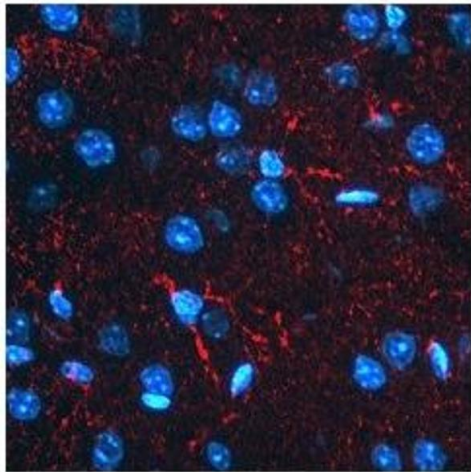
Concentration: Lot specific

Buffer: PBS

Handling Advice: Avoid repeated freeze/thaw cycles.
Dilute only prior to immediate use.

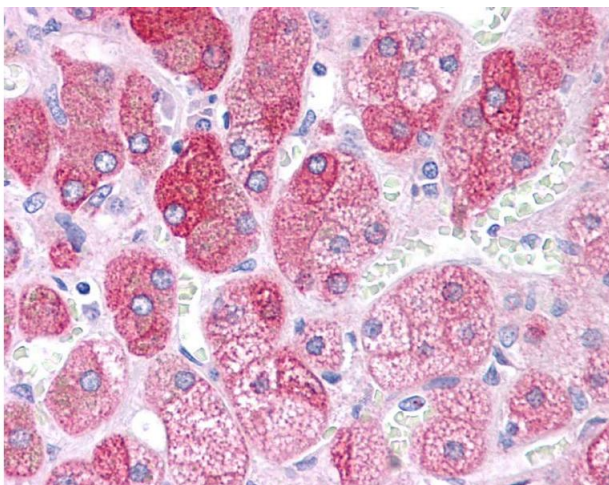
Storage: 4 °C/-20 °C

Storage Comment: Store at 2-8 °C for short periods. For longer periods of storage, store at -20 °C.



Immunofluorescence

Image 1. BACE1 antibody used at a concentration of 2-10 ug/ml to detect astrocytes in rodent brain (red). Nuclei staining with DAPI.



Immunohistochemistry

Image 2. BACE1 antibody was used for immunohistochemistry at a concentration of 4-8 ug/ml. Magnification is at 400X



Western Blotting

Image 3. BACE1 antibody used at 1 ug/ml to detect target protein.