

Datasheet for ABIN635858 **anti-SLITRK1 antibody (N-Term)**



[Go to Product page](#)

1 Image

Overview

Quantity:	100 µL
Target:	SLITRK1
Binding Specificity:	N-Term
Reactivity:	Rat, Human, Mouse
Host:	Rabbit
Clonality:	Polyclonal
Conjugate:	This SLITRK1 antibody is un-conjugated
Application:	Western Blotting (WB)

Product Details

Immunogen:	SLITRK1 antibody was raised using the N terminal of SLITRK1 corresponding to a region with amino acids CDLLSLKEWLENIPKNALIGRVVCEAPTRLQGKDLNETTEQDLCPKNRV
Specificity:	SLITRK1 antibody was raised against the N terminal of SLITRK1
Purification:	Affinity purified

Target Details

Target:	SLITRK1
Alternative Name:	SLITRK1 (SLITRK1 Products)
Background:	Members of the SLITRK family, such as SLITRK1, are integral membrane proteins with 2 N-terminal leucine-rich repeat (LRR) domains similar to those of SLIT proteins. Most SLITRKs, but not SLITRK1, also have C-terminal regions that share homology with neurotrophin receptors.

Target Details

SLITRKs are expressed predominantly in neural tissues and have neurite-modulating activity.

Molecular Weight: 78 kDa (MW of target protein)

Application Details

Application Notes: WB: 1 µg/mL
Optimal conditions should be determined by the investigator.

Comment: SLITRK1 Blocking Peptide, catalog no. 33R-1668, is also available for use as a blocking control in assays to test for specificity of this SLITRK1 antibody

Restrictions: For Research Use only

Handling

Format: Lyophilized

Reconstitution: Lyophilized powder. Add distilled water for a 1 mg/mL concentration of SLITRK1 antibody in PBS

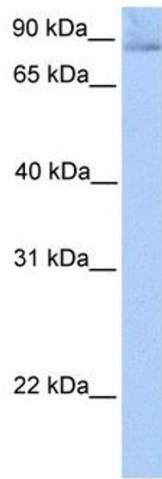
Concentration: Lot specific

Buffer: PBS

Handling Advice: Avoid repeated freeze/thaw cycles.
Dilute only prior to immediate use.

Storage: 4 °C/-20 °C

Storage Comment: Store at 2-8 °C for short periods. For longer periods of storage, store at -20 °C.



Western Blotting

Image 1. SLITRK1 antibody used at 1 ug/ml to detect target protein.