

## Datasheet for ABIN635873 **anti-LMF1 antibody (N-Term)**



[Go to Product page](#)

### 1 Image

#### Overview

Quantity:	100 µL
Target:	LMF1
Binding Specificity:	N-Term
Reactivity:	Human
Host:	Rabbit
Clonality:	Polyclonal
Conjugate:	This LMF1 antibody is un-conjugated
Application:	Western Blotting (WB)

#### Product Details

Immunogen:	LMF1 antibody was raised using the N terminal of LMF1 corresponding to a region with amino acids MRPDSPTMAAPAESLRRRKTGYSDPEPESPPAPGRGPAGSPAHLHTGTFW
Specificity:	LMF1 antibody was raised against the N terminal of LMF1
Purification:	Affinity purified

#### Target Details

Target:	LMF1
Alternative Name:	LMF1 ( <a href="#">LMF1 Products</a> )
Background:	The protein encoded by this gene resides in the endoplasmic reticulum, and is involved in the maturation and transport of lipoprotein lipase through the secretory pathway. Mutations in this gene are associated with combined lipase deficiency.

## Target Details

---

Molecular Weight: 65 kDa (MW of target protein)

## Application Details

---

Application Notes: WB: 1 µg/mL  
Optimal conditions should be determined by the investigator.

Comment: LMF1 Blocking Peptide, catalog no. 33R-6372, is also available for use as a blocking control in assays to test for specificity of this LMF1 antibody

Restrictions: For Research Use only

## Handling

---

Format: Lyophilized

Reconstitution: Lyophilized powder. Add distilled water for a 1 mg/mL concentration of LMF1 antibody in PBS

Concentration: Lot specific

Buffer: PBS

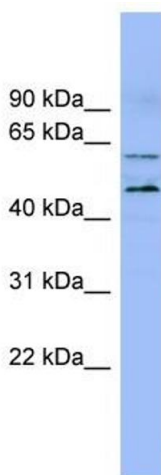
Handling Advice: Avoid repeated freeze/thaw cycles.  
Dilute only prior to immediate use.

Storage: 4 °C/-20 °C

Storage Comment: Store at 2-8 °C for short periods. For longer periods of storage, store at -20 °C.

## Images

---



### Western Blotting

**Image 1.** LMF1 antibody used at 1 ug/ml to detect target protein.