

Datasheet for ABIN635875  
**anti-SLC24A6 antibody (Middle Region)**



[Go to Product page](#)

1 Image

## Overview

Quantity:	100 µL
Target:	SLC24A6
Binding Specificity:	Middle Region
Reactivity:	Human, Mouse, Rat
Host:	Rabbit
Clonality:	Polyclonal
Conjugate:	This SLC24A6 antibody is un-conjugated
Application:	Western Blotting (WB)

## Product Details

Immunogen:	SLC24 A6 antibody was raised using the middle region of SLC24 6 corresponding to a region with amino acids SIGDAFSDFTLARQGYPRMAFSACFGGIIFNILVGVGLGCLLQISRSHTE
Specificity:	SLC24 A6 antibody was raised against the middle region of SLC24 6
Purification:	Affinity purified

## Target Details

Target:	SLC24A6
Alternative Name:	SLC24A6 ( <a href="#">SLC24A6 Products</a> )
Background:	SLC24A6 belongs to a family of potassium-dependent sodium/calcium exchangers that maintain cellular calcium homeostasis through the electrogenic countertransport of 4 sodium ions for 1 calcium ion and 1 potassium ion.

## Target Details

---

Molecular Weight: 64 kDa (MW of target protein)

Pathways: [Carbohydrate Homeostasis](#)

## Application Details

---

Application Notes: WB: 1 µg/mL  
Optimal conditions should be determined by the investigator.

Comment: SLC24A6 Blocking Peptide, catalog no. 33R-8526, is also available for use as a blocking control in assays to test for specificity of this SLC24A6 antibody

Restrictions: For Research Use only

## Handling

---

Format: Lyophilized

Reconstitution: Lyophilized powder. Add distilled water for a 1 mg/mL concentration of SLC20 6 antibody in PBS

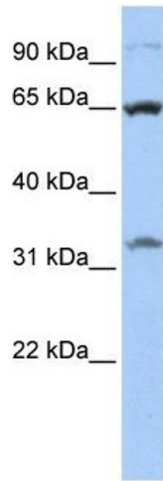
Concentration: Lot specific

Buffer: PBS

Handling Advice: Avoid repeated freeze/thaw cycles.  
Dilute only prior to immediate use.

Storage: 4 °C/-20 °C

Storage Comment: Store at 2-8 °C for short periods. For longer periods of storage, store at -20 °C.



### Western Blotting

**Image 1.** SLC24A6 antibody used at 1 ug/ml to detect target protein.