

Datasheet for ABIN635883 **anti-PTPRA antibody (C-Term)**



[Go to Product page](#)

1 Image

Overview

Quantity:	100 µL
Target:	PTPRA
Binding Specificity:	C-Term
Reactivity:	Human, Mouse, Rat
Host:	Rabbit
Clonality:	Polyclonal
Conjugate:	This PTPRA antibody is un-conjugated
Application:	Western Blotting (WB)

Product Details

Immunogen:	PTPRA antibody was raised using the C terminal of PTPRA corresponding to a region with amino acids SRQIRQFHFHGWPEVGIPSDGKGMISIIAAVQKQQQSGNHPI TVHCSAG
Specificity:	PTPRA antibody was raised against the C terminal of PTPRA
Purification:	Affinity purified

Target Details

Target:	PTPRA
Alternative Name:	PTPRA (PTPRA Products)
Background:	PTPRA is a member of the protein tyrosine phosphatase (PTP) family. PTPs are known to be signaling molecules that regulate a variety of cellular processes including cell growth, differentiation, mitotic cycle, and oncogenic transformation. PTPRA contains an extracellular

Target Details

domain, a single transmembrane segment and two tandem intracytoplasmic catalytic domains, and thus represents a receptor-type PTP. PTPRA has been shown to dephosphorylate and activate Src family tyrosine kinases, and is implicated in the regulation of integrin signaling, cell adhesion and proliferation.

Molecular Weight: 89 kDa (MW of target protein)

Application Details

Application Notes: WB: 1 µg/mL
Optimal conditions should be determined by the investigator.

Comment: PTPRA Blocking Peptide, catalog no. 33R-8769, is also available for use as a blocking control in assays to test for specificity of this PTPRA antibody

Restrictions: For Research Use only

Handling

Format: Lyophilized

Reconstitution: Lyophilized powder. Add distilled water for a 1 mg/mL concentration of PTPRA antibody in PBS

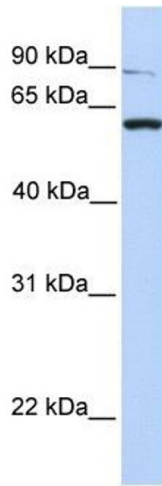
Concentration: Lot specific

Buffer: PBS

Handling Advice: Avoid repeated freeze/thaw cycles.
Dilute only prior to immediate use.

Storage: 4 °C/-20 °C

Storage Comment: Store at 2-8 °C for short periods. For longer periods of storage, store at -20 °C.



Western Blotting

Image 1. PTPRA antibody used at 1 ug/ml to detect target protein.