

Datasheet for ABIN635884
anti-SSR1 antibody

3 Images



[Go to Product page](#)

Overview

Quantity:	100 µL
Target:	SSR1
Reactivity:	Human, Mouse, Dog, Rat
Host:	Rabbit
Clonality:	Polyclonal
Conjugate:	This SSR1 antibody is un-conjugated
Application:	Western Blotting (WB), Immunohistochemistry (IHC)

Product Details

Immunogen:	SSR1 antibody was raised using a synthetic peptide corresponding to a region with amino acids DDEAEVEEDEPTDLVEDKKEEDVSGEPEASPSADTTILFVKGEDFPANNI
Purification:	Affinity purified

Target Details

Target:	SSR1
Alternative Name:	SSR1 (SSR1 Products)
Background:	The signal sequence receptor (SSR) is a glycosylated endoplasmic reticulum (ER) membrane receptor associated with protein translocation across the ER membrane. The SSR consists of 2 subunits, a 34 kDa glycoprotein encoded by this gene and a 22 kDa glycoprotein.
Molecular Weight:	32 kDa (MW of target protein)
Pathways:	ER-Nucleus Signaling

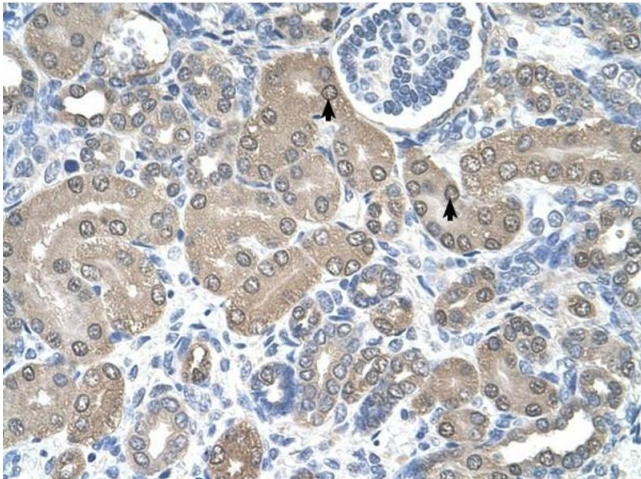
Application Details

Application Notes:	WB: 0.5 µg/mL, IHC: 4-8 µg/mL Optimal conditions should be determined by the investigator.
Comment:	SSR1 Blocking Peptide, catalog no. 33R-1878, is also available for use as a blocking control in assays to test for specificity of this SSR1 antibody
Restrictions:	For Research Use only

Handling

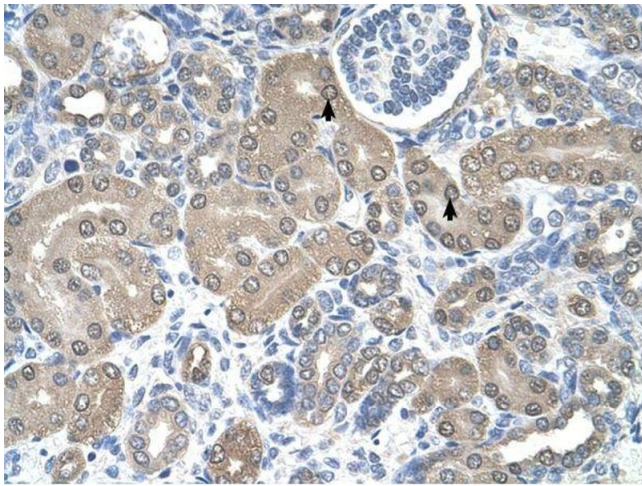
Format:	Lyophilized
Reconstitution:	Lyophilized powder. Add distilled water for a 1 mg/mL concentration of SSR1 antibody in PBS
Concentration:	Lot specific
Buffer:	PBS
Handling Advice:	Avoid repeated freeze/thaw cycles.
Storage:	4 °C/-20 °C
Storage Comment:	Store at 2-8 °C for short periods. For longer periods of storage, store at -20 °C.

Images



Immunohistochemistry

Image 1. SSR1 antibody was used for immunohistochemistry at a concentration of 4-8 ug/ml to stain Epithelial cells of renal tubule (arrows) in Human Kidney. Magnification is at 400X



Immunohistochemistry

Image 2. SSR1 antibody was used for immunohistochemistry at a concentration of 4-8 ug/ml. Magnification is at 400X



Western Blotting

Image 3. SSR1 antibody used at 0.5 ug/ml to detect target protein.