

Datasheet for ABIN635885
anti-B4GALT3 antibody (Middle Region)



[Go to Product page](#)

1 Image

Overview

Quantity:	100 µL
Target:	B4GALT3
Binding Specificity:	Middle Region
Reactivity:	Human, Rat, Mouse
Host:	Rabbit
Clonality:	Polyclonal
Conjugate:	This B4GALT3 antibody is un-conjugated
Application:	Western Blotting (WB)

Product Details

Immunogen:	B4 GALT3 antibody was raised using the middle region of B4 ALT3 corresponding to a region with amino acids MVKHRGDKGNEENPHRFDLLVRTQNSWTQDGMNSLTYQLLARELGPLYTN
Specificity:	B4 GALT3 antibody was raised against the middle region of B4 ALT3
Purification:	Affinity purified

Target Details

Target:	B4GALT3
Alternative Name:	B4GALT3 (B4GALT3 Products)
Background:	This gene is one of seven beta-1,4-galactosyltransferase (beta4GalT) genes. They encode type II membrane-bound glycoproteins that appear to have exclusive specificity for the donor substrate UDP-galactose, all transfer galactose in a beta1,4 linkage to similar acceptor sugars:

Target Details

GlcNAc, Glc, and Xyl. Each beta4GalT has a distinct function in the biosynthesis of different glycoconjugates and saccharide structures. As type II membrane proteins, they have an N-terminal hydrophobic signal sequence that directs the protein to the Golgi apparatus and which then remains uncleaved to function as a transmembrane anchor.

Molecular Weight: 44 kDa (MW of target protein)

Pathways: [Glycosaminoglycan Metabolic Process](#)

Application Details

Application Notes: WB: 1 µg/mL
Optimal conditions should be determined by the investigator.

Comment: B4GALT3 Blocking Peptide, catalog no. 33R-6588, is also available for use as a blocking control in assays to test for specificity of this B4GALT3 antibody

Restrictions: For Research Use only

Handling

Format: Lyophilized

Reconstitution: Lyophilized powder. Add distilled water for a 1 mg/mL concentration of B0 ALT3 antibody in PBS

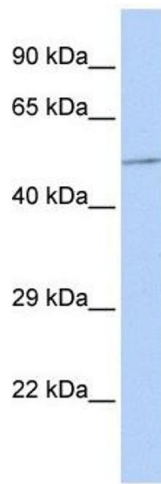
Concentration: Lot specific

Buffer: PBS

Handling Advice: Avoid repeated freeze/thaw cycles.
Dilute only prior to immediate use.

Storage: 4 °C/-20 °C

Storage Comment: Store at 2-8 °C for short periods. For longer periods of storage, store at -20 °C.



Western Blotting

Image 1. B4GALT3 antibody used at 1 ug/ml to detect target protein.