

Datasheet for ABIN635887 **anti-LMAN2 antibody (N-Term)**

3 Images



[Go to Product page](#)

Overview

Quantity:	100 µL
Target:	LMAN2
Binding Specificity:	N-Term
Reactivity:	Human, Mouse, Dog
Host:	Rabbit
Clonality:	Polyclonal
Conjugate:	This LMAN2 antibody is un-conjugated
Application:	Western Blotting (WB), Immunohistochemistry (IHC)

Product Details

Immunogen:	LMAN2 antibody was raised using the N terminal of LMAN2 corresponding to a region with amino acids SLIKPYQGVGSSSMPLWDFQGSTMLTSQYVRLTPDERSKEGSIWNHQPCF
Specificity:	LMAN2 antibody was raised against the N terminal of LMAN2
Purification:	Affinity purified

Target Details

Target:	LMAN2
Alternative Name:	LMAN2 (LMAN2 Products)
Background:	LMAN2 plays a role as an intracellular lectin in the early secretory pathway. It interacts with N-acetyl-D-galactosamine and high-mannose type glycans and may also bind to O-linked glycans. It is involved in the transport and sorting of glycoproteins carrying high mannose-type glycans.

Target Details

Molecular Weight: 36 kDa (MW of target protein)

Pathways: [SARS-CoV-2 Protein Interactome](#)

Application Details

Application Notes: WB: 1 µg/mL, IHC: 4-8 µg/mL
Optimal conditions should be determined by the investigator.

Comment: LMAN2 Blocking Peptide, catalog no. 33R-8595, is also available for use as a blocking control in assays to test for specificity of this LMAN2 antibody

Restrictions: For Research Use only

Handling

Format: Lyophilized

Reconstitution: Lyophilized powder. Add distilled water for a 1 mg/mL concentration of LMAN2 antibody in PBS

Concentration: Lot specific

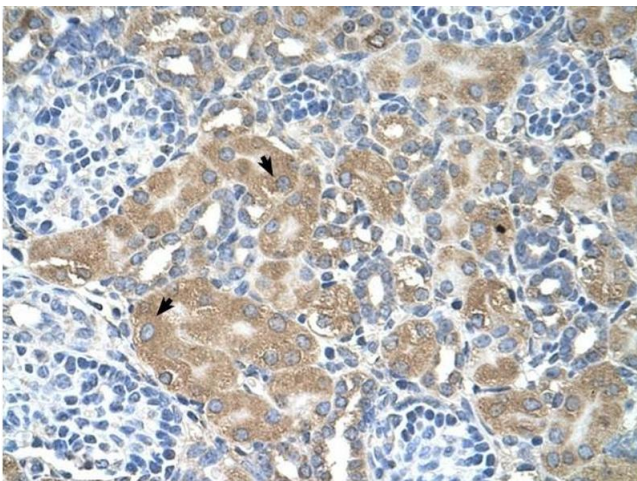
Buffer: PBS

Handling Advice: Avoid repeated freeze/thaw cycles.
Dilute only prior to immediate use.

Storage: 4 °C/-20 °C

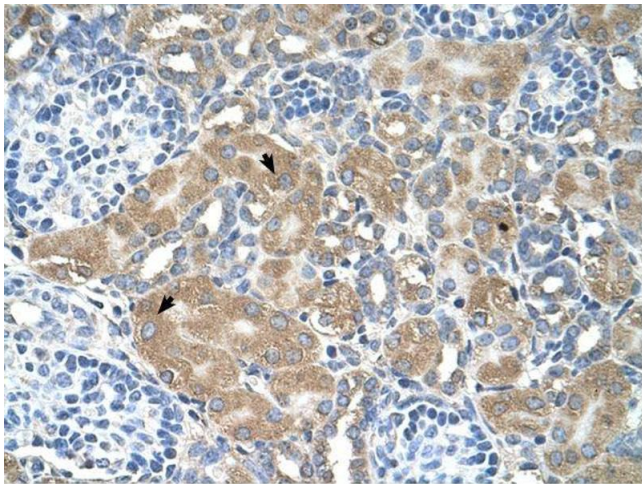
Storage Comment: Store at 2-8 °C for short periods. For longer periods of storage, store at -20 °C.

Images



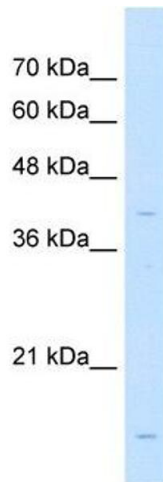
Immunohistochemistry

Image 1. LMAN2 antibody was used for immunohistochemistry at a concentration of 4-8 µg/ml to stain Epithelial cells of renal tubule (arrows) in Human Kidney. Magnification is at 400X



Immunohistochemistry

Image 2. LMAN2 antibody was used for immunohistochemistry at a concentration of 4-8 ug/ml. Magnification is at 400X



Western Blotting

Image 3. LMAN2 antibody used at 1 ug/ml to detect target protein.