

Datasheet for ABIN635896
anti-EMID1 antibody (C-Term)



[Go to Product page](#)

1 Image

Overview

Quantity:	100 µL
Target:	EMID1
Binding Specificity:	C-Term
Reactivity:	Human, Rat, Mouse
Host:	Rabbit
Clonality:	Polyclonal
Conjugate:	This EMID1 antibody is un-conjugated
Application:	Western Blotting (WB)

Product Details

Immunogen:	EMID1 antibody was raised using the C terminal of EMID1 corresponding to a region with amino acids TMIGLYEPELGGAGPAGTGTPSLLRGKRGGHATNYRIVAPRSRDERG
Specificity:	EMID1 antibody was raised against the C terminal of EMID1
Purification:	Affinity purified

Target Details

Target:	EMID1
Alternative Name:	EMID1 (EMID1 Products)
Background:	EMID1 contains 1 collagen-like domain and 1 EMI domain. The exact function of EMID1 remains unknown.

Target Details

Molecular Weight: 45 kDa (MW of target protein)

Application Details

Application Notes: WB: 1 µg/mL
Optimal conditions should be determined by the investigator.

Comment: EMID1 Blocking Peptide, catalog no. 33R-9201, is also available for use as a blocking control in assays to test for specificity of this EMID1 antibody

Restrictions: For Research Use only

Handling

Format: Lyophilized

Reconstitution: Lyophilized powder. Add distilled water for a 1 mg/mL concentration of EMID1 antibody in PBS

Concentration: Lot specific

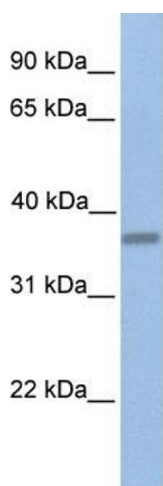
Buffer: PBS

Handling Advice: Avoid repeated freeze/thaw cycles.
Dilute only prior to immediate use.

Storage: 4 °C/-20 °C

Storage Comment: Store at 2-8 °C for short periods. For longer periods of storage, store at -20 °C.

Images



Western Blotting

Image 1. EMID1 antibody used at 1 ug/ml to detect target protein.