

Datasheet for ABIN635898 **anti-C2CD2L antibody (C-Term)**



[Go to Product page](#)

1 Image

Overview

Quantity:	100 µL
Target:	C2CD2L
Binding Specificity:	C-Term
Reactivity:	Human, Mouse, Rat
Host:	Rabbit
Clonality:	Polyclonal
Conjugate:	This C2CD2L antibody is un-conjugated
Application:	Western Blotting (WB)

Product Details

Immunogen:	TMEM24 antibody was raised using the C terminal Of Tmem24 corresponding to a region with amino acids AGLSQSHDDLSNATATPSVRKKAGSFSRRLIKRFSFKSKPKANGNPSPQL
Specificity:	TMEM24 antibody was raised against the C terminal Of Tmem24
Purification:	Affinity purified

Target Details

Target:	C2CD2L
Alternative Name:	TMEM24 (C2CD2L Products)
Background:	GADD45B is a member of a group of genes whose transcript levels are increased following stressful growth arrest conditions and treatment with DNA-damaging agents. The genes in this group respond to environmental stresses by mediating activation of the p38/JNK pathway. This

Target Details

activation is mediated via their proteins binding and activating MTK1/MEKK4 kinase, which is an upstream activator of both p38 and JNK MAPKs. The function of these genes or their protein products is involved in the regulation of growth and apoptosis. These genes are regulated by different mechanisms, but they are often coordinately expressed and can function cooperatively in inhibiting cell growth.

Molecular Weight: 76 kDa (MW of target protein)

Application Details

Application Notes: WB: 0.5 µg/mL
Optimal conditions should be determined by the investigator.

Comment: TMEM24 Blocking Peptide, catalog no. 33R-1209, is also available for use as a blocking control in assays to test for specificity of this TMEM24 antibody

Restrictions: For Research Use only

Handling

Format: Lyophilized

Reconstitution: Lyophilized powder. Add distilled water for a 1 mg/mL concentration of TMEM24 antibody in PBS

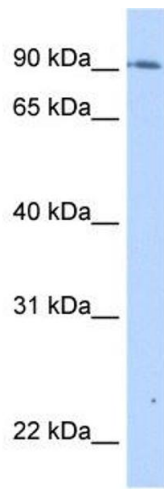
Concentration: Lot specific

Buffer: PBS

Handling Advice: Avoid repeated freeze/thaw cycles.
Dilute only prior to immediate use.

Storage: 4 °C/-20 °C

Storage Comment: Store at 2-8 °C for short periods. For longer periods of storage, store at -20 °C.



Western Blotting

Image 1. TMEM24 antibody used at 0.5 ug/ml to detect target protein.