

Datasheet for ABIN635903
anti-Ribophorin II antibody (N-Term)



[Go to Product page](#)

3 Images

Overview

Quantity:	100 µL
Target:	Ribophorin II (RPN2)
Binding Specificity:	N-Term
Reactivity:	Human, Dog
Host:	Rabbit
Clonality:	Polyclonal
Conjugate:	This Ribophorin II antibody is un-conjugated
Application:	Western Blotting (WB), Immunohistochemistry (IHC)

Product Details

Immunogen:	Ribophorin II antibody was raised using the N terminal of RPN2 corresponding to a region with amino acids ASQEALSALTARLSKEETVLATVQALQTASHLSQQADLRISIVEEIEDLVA
Specificity:	Ribophorin II antibody was raised against the N terminal of RPN2
Purification:	Affinity purified

Target Details

Target:	Ribophorin II (RPN2)
Alternative Name:	Ribophorin II (RPN2 Products)
Background:	RPN2 is a type I integral membrane protein found only in the rough endoplasmic reticulum. The protein is part of an N-oligosaccharyl transferase complex that links high mannose oligosaccharides to asparagine residues found in the Asn-X-Ser/Thr consensus motif of

Target Details

nascent polypeptide chains.

Molecular Weight: 67 kDa (MW of target protein)

Application Details

Application Notes: WB: 0.25 µg/mL, IHC: 4-8 µg/mL
Optimal conditions should be determined by the investigator.

Comment: Ribophorin II Blocking Peptide, catalog no. 33R-1522, is also available for use as a blocking control in assays to test for specificity of this Ribophorin II antibody

Restrictions: For Research Use only

Handling

Format: Lyophilized

Reconstitution: Lyophilized powder. Add distilled water for a 1 mg/mL concentration of RPN2 antibody in PBS

Concentration: Lot specific

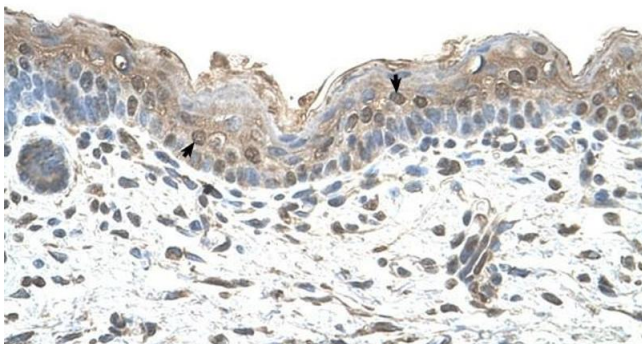
Buffer: PBS

Handling Advice: Avoid repeated freeze/thaw cycles.
Dilute only prior to immediate use.

Storage: 4 °C/-20 °C

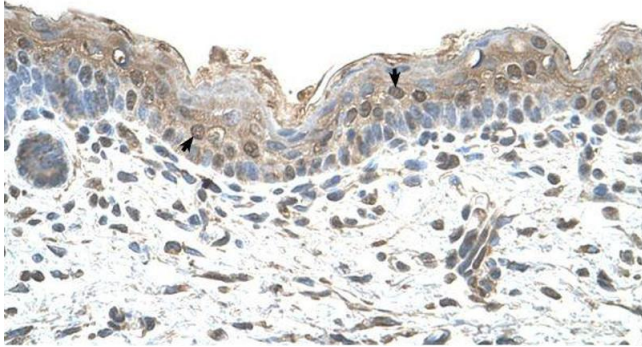
Storage Comment: Store at 2-8 °C for short periods. For longer periods of storage, store at -20 °C.

Images



Immunohistochemistry

Image 1. Ribophorin II antibody was used for immunohistochemistry at a concentration of 4-8 µg/ml to stain Squamous epithelial cells (arrows) in Human Skin. Magnification is at 400X



Immunohistochemistry

Image 2. Ribophorin II antibody was used for immunohistochemistry at a concentration of 4-8 ug/ml. Magnification is at 400X



Western Blotting

Image 3. Ribophorin II antibody used at 0.25 ug/ml to detect target protein.