

Datasheet for ABIN635906
anti-GPR27 antibody (N-Term)



[Go to Product page](#)

1 Image

Overview

Quantity:	100 µL
Target:	GPR27
Binding Specificity:	N-Term
Reactivity:	Human
Host:	Rabbit
Clonality:	Polyclonal
Conjugate:	This GPR27 antibody is un-conjugated
Application:	Western Blotting (WB)

Product Details

Immunogen:	GPR27 antibody was raised using the N terminal of GPR27 corresponding to a region with amino acids MANASEPGSGGGEEAAALGLKLATLSLLLCVSLAGNVLFALLIVRERSLH
Specificity:	GPR27 antibody was raised against the N terminal of GPR27
Purification:	Affinity purified

Target Details

Target:	GPR27
Alternative Name:	GPR27 (GPR27 Products)
Background:	GPR27 belongs to the G-protein coupled receptor 1 family. GPR27 is an orphan receptor. It is a possible candidate for amine-like G-protein coupled receptor.

Target Details

Molecular Weight: 40 kDa (MW of target protein)

Application Details

Application Notes: WB: 1 µg/mL
Optimal conditions should be determined by the investigator.

Comment: GPR27 Blocking Peptide, catalog no. 33R-5705, is also available for use as a blocking control in assays to test for specificity of this GPR27 antibody

Restrictions: For Research Use only

Handling

Format: Lyophilized

Reconstitution: Lyophilized powder. Add distilled water for a 1 mg/mL concentration of GPR27 antibody in PBS

Concentration: Lot specific

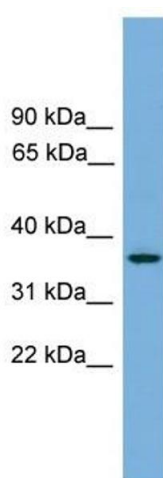
Buffer: PBS

Handling Advice: Avoid repeated freeze/thaw cycles.
Dilute only prior to immediate use.

Storage: 4 °C/-20 °C

Storage Comment: Store at 2-8 °C for short periods. For longer periods of storage, store at -20 °C.

Images



Western Blotting

Image 1. GPR27 antibody used at 1 ug/ml to detect target protein.