

Datasheet for ABIN635929

anti-Receptor Accessory Protein 4 antibody (N-Term)[Go to Product page](#)**1** Image

Overview

Quantity:	100 µL
Target:	Receptor Accessory Protein 4 (REEP4)
Binding Specificity:	N-Term
Reactivity:	Human, Mouse, Rat
Host:	Rabbit
Clonality:	Polyclonal
Conjugate:	This Receptor Accessory Protein 4 antibody is un-conjugated
Application:	Western Blotting (WB)

Product Details

Immunogen:	REEP4 antibody was raised using the N terminal of REEP4 corresponding to a region with amino acids EIKMAFVLWLLSPYTKGASLLYRKFVHPSLSRHEKEIDAYIVQAKERSYE
Specificity:	REEP4 antibody was raised against the N terminal of REEP4
Purification:	Affinity purified

Target Details

Target:	Receptor Accessory Protein 4 (REEP4)
Alternative Name:	REEP4 (REEP4 Products)
Background:	REEP4 belongs to the DP1 family. It may enhance the cell surface expression of odorant receptors.

Target Details

Molecular Weight: 29 kDa (MW of target protein)

Application Details

Application Notes: WB: 1 µg/mL
Optimal conditions should be determined by the investigator.

Comment: REEP4 Blocking Peptide, catalog no. 33R-2476, is also available for use as a blocking control in assays to test for specificity of this REEP4 antibody

Restrictions: For Research Use only

Handling

Format: Lyophilized

Reconstitution: Lyophilized powder. Add distilled water for a 1 mg/mL concentration of REEP4 antibody in PBS

Concentration: Lot specific

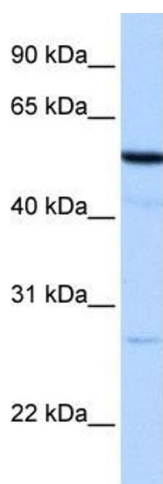
Buffer: PBS

Handling Advice: Avoid repeated freeze/thaw cycles.
Dilute only prior to immediate use.

Storage: 4 °C/-20 °C

Storage Comment: Store at 2-8 °C for short periods. For longer periods of storage, store at -20 °C.

Images



Western Blotting

Image 1. REEP4 antibody used at 1 ug/ml to detect target protein.