

Datasheet for ABIN635939
anti-SLC22A13 antibody (N-Term)



[Go to Product page](#)

1 Image

Overview

Quantity:	100 µL
Target:	SLC22A13
Binding Specificity:	N-Term
Reactivity:	Human, Rat, Mouse
Host:	Rabbit
Clonality:	Polyclonal
Conjugate:	This SLC22A13 antibody is un-conjugated
Application:	Western Blotting (WB)

Product Details

Immunogen:	SLC22 A13 antibody was raised using the N terminal of SLC22 13 corresponding to a region with amino acids FFAHVMVLDEPHHCAVAWVKNHTEFNLSAAEQLVLSVPLDTAGHPEPCLM
Specificity:	SLC22 A13 antibody was raised against the N terminal of SLC22 13
Purification:	Affinity purified

Target Details

Target:	SLC22A13
Alternative Name:	SLC22A13 (SLC22A13 Products)
Background:	SLC22A13 is a member of the organic-cation transporter family. SLC22A13 is a transmembrane protein involved in the transport of small molecules. This protein can function to mediate urate uptake and is a high affinity nicotinate exchanger in the kidneys and the

Target Details

intestine.

Molecular Weight: 61 kDa (MW of target protein)

Application Details

Application Notes: WB: 1 µg/mL
Optimal conditions should be determined by the investigator.

Comment: SLC22A13 Blocking Peptide, catalog no. 33R-2884, is also available for use as a blocking control in assays to test for specificity of this SLC22A13 antibody

Restrictions: For Research Use only

Handling

Format: Lyophilized

Reconstitution: Lyophilized powder. Add distilled water for a 1 mg/mL concentration of SLC20 13 antibody in PBS

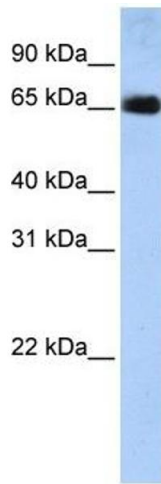
Concentration: Lot specific

Buffer: PBS

Handling Advice: Avoid repeated freeze/thaw cycles.
Dilute only prior to immediate use.

Storage: 4 °C/-20 °C

Storage Comment: Store at 2-8 °C for short periods. For longer periods of storage, store at -20 °C.



Western Blotting

Image 1. SLC22A13 antibody used at 1 ug/ml to detect target protein.