

Datasheet for ABIN635941  
**anti-SLC35A3 antibody**



[Go to Product page](#)

1 Image

## Overview

Quantity:	100 µL
Target:	SLC35A3
Reactivity:	Human
Host:	Rabbit
Clonality:	Polyclonal
Conjugate:	This SLC35A3 antibody is un-conjugated
Application:	Western Blotting (WB)

## Product Details

Immunogen:	SLC35 A3 antibody was raised using a synthetic peptide corresponding to a region with amino acids VAFVQWPSDSLDSKELSAGSQFVGLMAVLTAFCSSGFAGVYFEKILKET
Purification:	Affinity purified

## Target Details

Target:	SLC35A3
Alternative Name:	SLC35A3 ( <a href="#">SLC35A3 Products</a> )
Background:	SLC35A3 is a uridine diphosphate-N-acetylglucosamine transporter in the Golgi apparatus.
Molecular Weight:	36 kDa (MW of target protein)

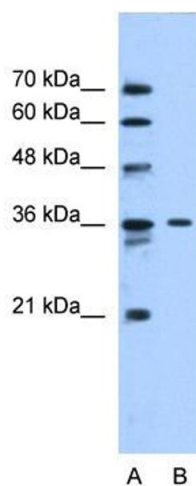
## Application Details

Application Notes:	WB: 0.5 µg/mL Optimal conditions should be determined by the investigator.
Comment:	SLC35A3 Blocking Peptide, catalog no. 33R-9415, is also available for use as a blocking control in assays to test for specificity of this SLC35A3 antibody
Restrictions:	For Research Use only

## Handling

Format:	Lyophilized
Reconstitution:	Lyophilized powder. Add distilled water for a 1 mg/mL concentration of SLC30 3 antibody in PBS
Concentration:	Lot specific
Buffer:	PBS
Handling Advice:	Avoid repeated freeze/thaw cycles.
Storage:	4 °C/-20 °C
Storage Comment:	Store at 2-8 °C for short periods. For longer periods of storage, store at -20 °C.

## Images



### Western Blotting

**Image 1.** SLC35A3 antibody used at 0.5 ug/ml to detect target protein.